

ENIGMA[®]
SLIDING POCKET DOORS

Open-up
to new
possibilities...

Allowing two door leaves to slide into one pocket
- Ideal when double-doors are not suitable.



FROM #SELO.

Telescopic
Sliding pocket doors

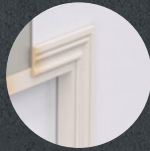
TELESCOPIC FEATURES

Achieve double-door spans in the footprint of a single door

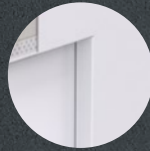
Up to 2600mm wide openings within the space of a single-sized door. The easy way to open-up your rooms without sacrificing wall or floor space.

TELESCOPIC DESIGNS

The system is available in a choice of **x3 trim designs** to suit your interior design:



Visible Trim

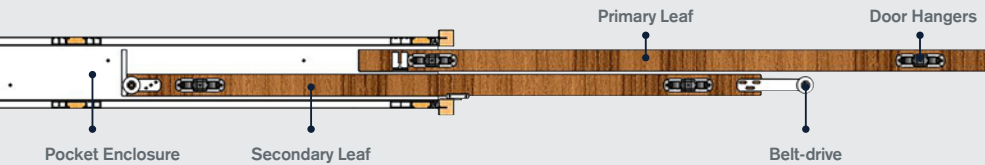


Concealed



Shadow gap

TELESCOPIC CONSTRUCTION



TELESCOPIC TECHNICAL

Kit codes

Wall build up:

- 146mm stud
- 1 or 2 layers of 12.5mm plasterboard (Depending on trim type)
- If using door heights of **2.3m+** it is recommended the wall is **double boarded**.

NOTE If using **x2 layers of 12.5mm** plasterboard add '196' to the product code.

Height up to 2130mm

Up to 926mm door width ET10 *C/T/S
Up to 1300mm door width ET20 *C/T/S

Height up to 2815mm

Up to 926mm door width ET11 *C/T/S
Up to 1300mm door width ET22 *C/T/S

* Specify trim type:

Concealed Frame - C
Visible Frame - T
Shadow Gap - S

Pocket doors
with **endless possibilities!**



Call 020 3880 0040

Email sales@enigmapocketdoors.com

www.enigmapocketdoors.com

