

# ENIGMA

SLIDING POCKET DOORS

INSTALLATION INSTRUCTIONS

## Telescopic (NFR C)

Non Fire Rated - Concealed Trim

The following instructions demonstrate how to install the **Telescopic Doors** to the NFR Concealed, Enigma Pocket Door.

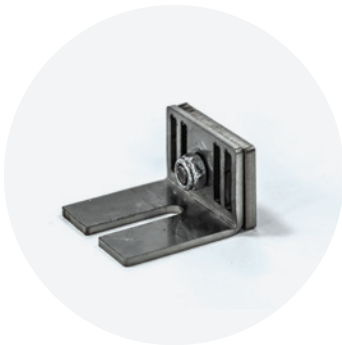
This guide is to be used in conjunction with the main **Frame Installation** instructions supplied with the kit. Visit our website for more:

[www.enigmapocketdoors.com](http://www.enigmapocketdoors.com)



### COMPONENTS

Modified June 2020 | Revision 001



Fixed Belt Clamp



Moving Connector



Fixed Pulley



Adjustable Pulley



Door Guide



Belt

4



6

Image needed

7



8

Image needed

**1** Pilot hole and fix the **Head Channel** using head channel screws. (See main guide)

**3** Using a laser level install the **Base Channel** and the **Floor Pin**. (See main guide)

**6** Screw the door hanger brackets on top of the doors as shown.

**2** Slide the **Remote Stop** into the **Slave Leaf** track then screw the tracks into place with **Type-3** screws, ensuring they are equally spaced between the sides of the **Head Channel** and along the centre lines, and butted up against the rear (pocket) stud.

**4** Install the **Fixed Belt Clamp** to the head as shown ensuring access to the hex bolt.

**7** Tap the plastic channel into the bottom of both doors as shown.

**5** Install the **Intermediate Jambs** in between the rear pocket stud and the leading-edge jamb, then fix the ONE leading edge jamb.

**8** Install the **Moving Connector, Adjustable Pulley**, and the **Fixed Pulley** on top of the doors as shown. (Do not fix to belt yet)

9



11



12

Image needed

13



**9** Wipe out the tracks with a damp cloth to remove any swarf or debris. Slide the roller wheels into the tracks (two wheels in each track) and set the bolts as shown.

**12** Clamp 6mm packers between the doors top and bottom to keep the doors from binding and to maintain correct distance. Then slide the doors left and right in the pocket to get even gaps between the pocket sides and the door leaves. Once the gaps are all even, nip the bolts tight enough to prevent sideways movement then remove the packers.

**14** Fix the timber lipping to the rear of the passive leaf to block the view into the pocket when the door is open.

**10** Hang the doors onto the roller wheel bolts ensuring the doors run smoothly.

**15** Once doors are set correctly, fix the leading-edge jamb and fix plasterboard to the pocket sides. Refer to the main installation instructions to complete your installation.

**IMPORTANT**

Do not fasten the bolts at this stage as further adjustments may be necessary.

**11** Install the "L" shaped **Door Guide** to the heel of the active leaf, ensuring to leave the pin loose for adjustment later.

**13** Slide both doors into the pocket then fix one end of the belt into the clip. Thread the belt round the rollers front and back of the doors then into the moving connector. Tighten the belt to remove the slack and fix in place.