

INSTALLATION INSTRUCTIONS

Simultaneous opening Glass door leaf

SYSTEM PREPARATION

Modified April 2024 | Revision 001



The following instructions demonstrate how to install the Enigma simultaneous opening mechanism. This needs to be installed when the door leafs are being hung.

IMPORTANT

The door leaf will need reducing in height by an extra 5mm.

Use these instructions in conjunction with the **Enigma Glass Leaf installation guide**.

Do not board the pockets or install the trims until the simultaneous opening mechanism and leaf are installed.

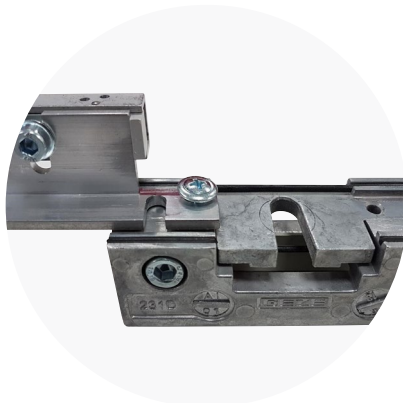
IMPORTANT

If using a soft close mechanism ensure the brackets line-up with the soft close roller cassette.



1.

Fix the gear brackets 80mm from edge of the doors.



2.

Fix the carrier brackets onto the glass clamp.



3.

The brackets are mounted the opposite way round to each other on both doors.

IMPORTANT

The following steps show a timber door leaf. The principle is the same for both glass and timber.



4.

Insert the white nylon door stop into either ends of the tracks and tighten grub screw.



5.

Insert the guide pulley in behind the door stop and fix into place by tightening the bolt using a spanner.



6.

Assemble the sliding gear and hang the door leafs. The door should sit 30-35mm below the track.



7.

Insert the toothed belt into the carrier plate with the teeth facing out and fasten with the grooved pin.



8.

Bring the toothed belt around the guide pulley nearest the carrier plate.



9.

Bring round through the carrier plate on the opposite door.



10.

Loop round the second guide pulley.



11.

Cut the toothed belt to length so it will fit into the 1st carrier plate.



12.

Insert in the first carrier plate and secure into place using the groove pin.

IMPORTANT

The following steps show a timber door leaf. The principle is the same for both glass and timber.



13.

Bolt the carrier plate back to the door.



14.

Close the doors so they meet in the middle.



15.

Unbolt the other carrier plate and insert the grooved pin into the belt.



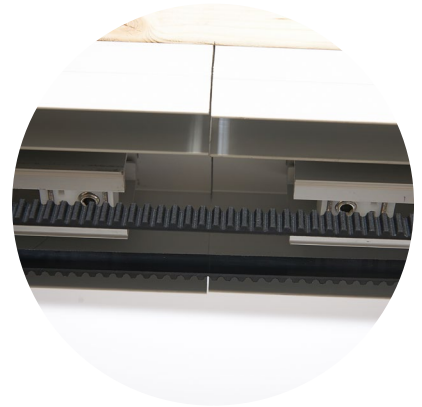
16.

Bolt the second carrier plate back into place. Ensure the doors stay together in the middle.



17.

To tighten the belt, slide the screwdriver between the guide roller and buffer and lever tightening the belt. While the belt is tight tighten the grub screw to hold the tension.



18.

Insert the door stops into the track and fix into place in the centre.

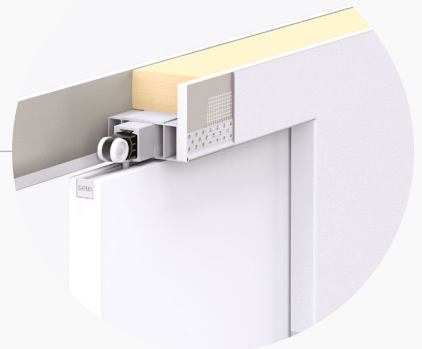


19.

The mechanism will now work together so when you open or close one leaf the other will work in the corresponding manner.

Are you installing an **NFR Concealed Trim**?

If the answer is yes, please turn to the next page for additional installation steps required for NFR Concealed Trims.



ADDITIONAL NFR CONCEALED TRIM STEPS



1.

Install the timber head trim (before plasterboard). Cut the head trim to the opening width and slot into place.



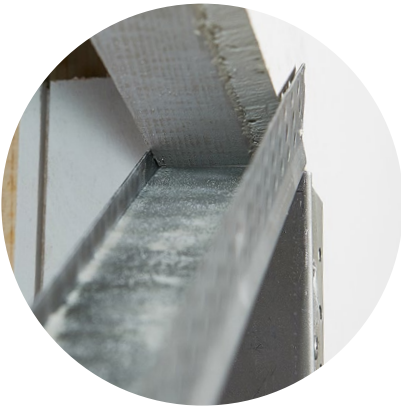
2.

The wall can now be plasterboarded over the pocket and on top of the timber trim.



3.

The leading edge trims can be fitted. Refer to **Step 3** in the **NFR C Installation Instructions**.

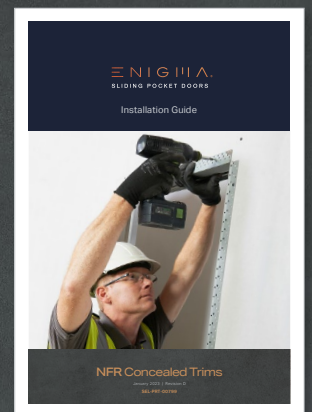


4.

Cut the metal trim to the opening width and slide over the timber trim and plasterboard and fix into place.

Follow the final steps of the **NFR C Installation Guide** to complete your Enigma installation.

Installation guides are available to download from our website www.enigmapocketdoors.com



For help and advice with your installation contact our experienced team:

020 3880 0339

Email sales@enigmapocketdoors.com

