

Standard Frame

Installation Guide

SEL-PRT-02667 | Rev. 2



Part 1 Frame Installation

This installation guide is to be used in conjunction with the other configurable options, depending on the specification.



Thank you for choosing Enigma

To ensure the installation process is simple and efficient, we recommend you read this guide in full first.

Specific tools are also required to complete the installation:



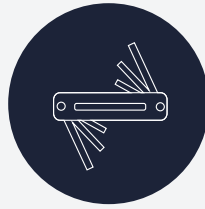
Pencil



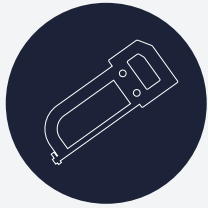
Tape Measure



Knife



Allen Keys



Hacksaw / Tin-snips



Laser Level



Cordless Screwdriver



Miter Saw

Getting started

Before you start installation ensure you have read and understood the instructions.

DELIVERY

The Enigma pocket door system will be delivered in at least two boxes. One is the pocket frame and the other is the trim surround.

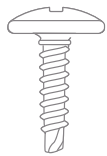
If a door leaf has been ordered this will come separately.



Standard frame kit contents

Familiarize yourself with components included. All fixings will come pre-packaged to suit your specific project requirements.

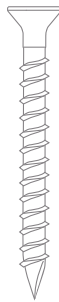
FRAME FIXINGS



Type-01 - 11/64 × 17/32"

Wafer Head
Self Drilling

SEL-PRT-00685



Type-02 - 3/16 × 19/16"

Countersunk Pozi Single Slash
Wood Screws

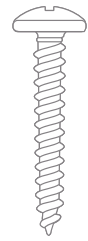
SEL-PRT-00686



Type-03 - 5/32 × 2"

Countersunk Pozi
Wood Screws

SEL-PRT-00687



Type-04 - 5/32 × 13/16"

Cross Round Head Pozi
Wood Screws

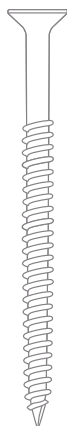
SEL-PRT-00688



Type-05 - 9/64 × 1"

Bugle Head Phillips
Self Drilling

SEL-PRT-00689

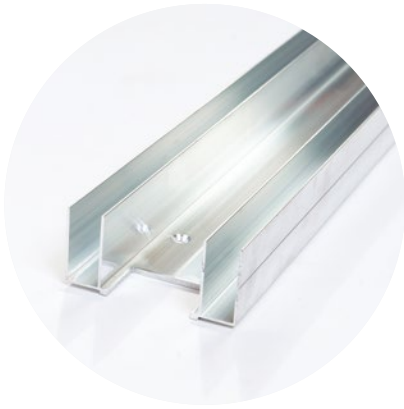


Type-09 - 13/64 × 2"

Countersunk Pozi Single Slash
Wood Screws

SEL-PRT-00693

SYSTEM COMPONENTS



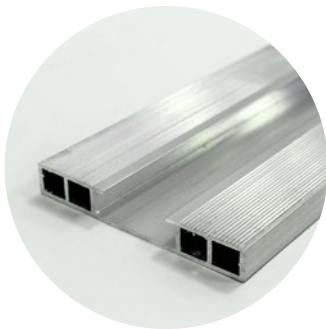
Base Channel



Head Channel



Leading Edge Jamb



Intermediate Jamb



Lumber Insert



Sliding Track



Pocket Packer



Remote-stop*



Door-guide Pin & Channel



Sliding Gear Set*



Brush Strip

*Components may vary depending on options chosen.

Wall construction preparation

The Enigma system can be fitted to steel or lumber framing partitions. If using steel you must ensure the head stud is strong enough to take the door weight.

IMPORTANT INSTALLATION NOTES

1. Framing size

The framing size required is **3 11/32"**.
If using steel studs a 3 11/32" head and base track and 3 5/8" uprights should be used.

2. Steel studs

If using steel studs, lumber inserts are required within the studs to provide additional strength.

3. Doors above 7' 6"

If the door height you are installing is above 7' 6" then using 2 layers of drywall is recommended. To order kits to suite two layers of drywall add 'Double board' to the product code.

4. Allow for accessories

If you are using an accessory such as a **Soft Close/Open, Touch Latch** etc, please ensure you familiarize yourself with these instructions first.

Custom requirements?

Enigma can be customized to suit custom projects. In principle, the installation process remains the same, however certain installation dimensions may differ. Please contact the Selo team to discuss your custom requirements.



STRENGTHEN HEAD

When constructing your stud partition, please ensure the head is strong enough to take the weight of the sliding door that will hang from it.

IMPORTANT

If using a Self-supporting Head please refer to those specific installation instructions.

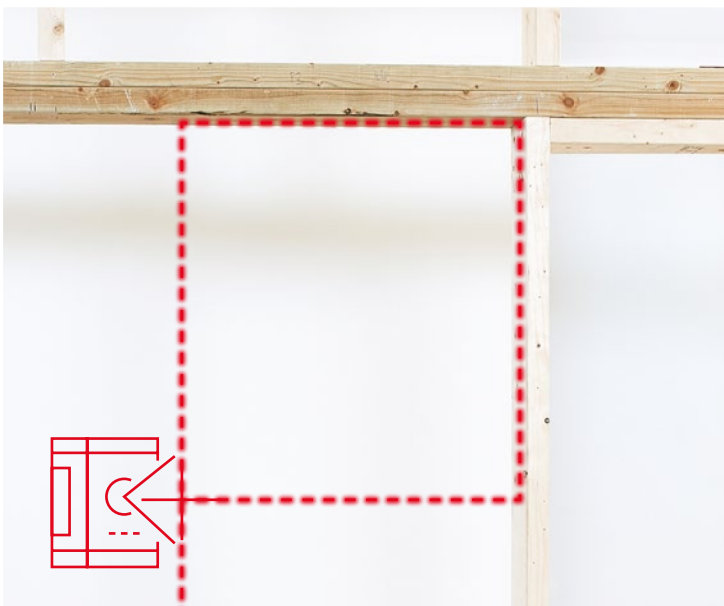


CHECK SIZE WITH SCHEDULE

When forming the structural opening, please ensure you are working to the correct opening size provided on the door schedule.

IMPORTANT

If using a Self Closer please refer to those specific installation instructions.



LEVEL-UP

Ensure the opening is square and plumb.

IMPORTANT

We strongly recommend the use of a laser level for setting out.

Frame installation

Head Channels may be made up in multiple lengths for wider kits. Clean any cuts and wipe with a wet cloth to remove any swarf.



PREPARE HEAD CHANNEL & SLIDING TRACK

A. Cut the **Head Channel** to suit the structural opening width. If **Self-supporting Head** is being used, cut the **Head Channel** to structural opening **less 3 11/32"**.

B. Remove the **Remote-stop**, from the **Sliding Track**, then cut the **Sliding Track** to the **Head Channel** width, **less 3 5/16"**.





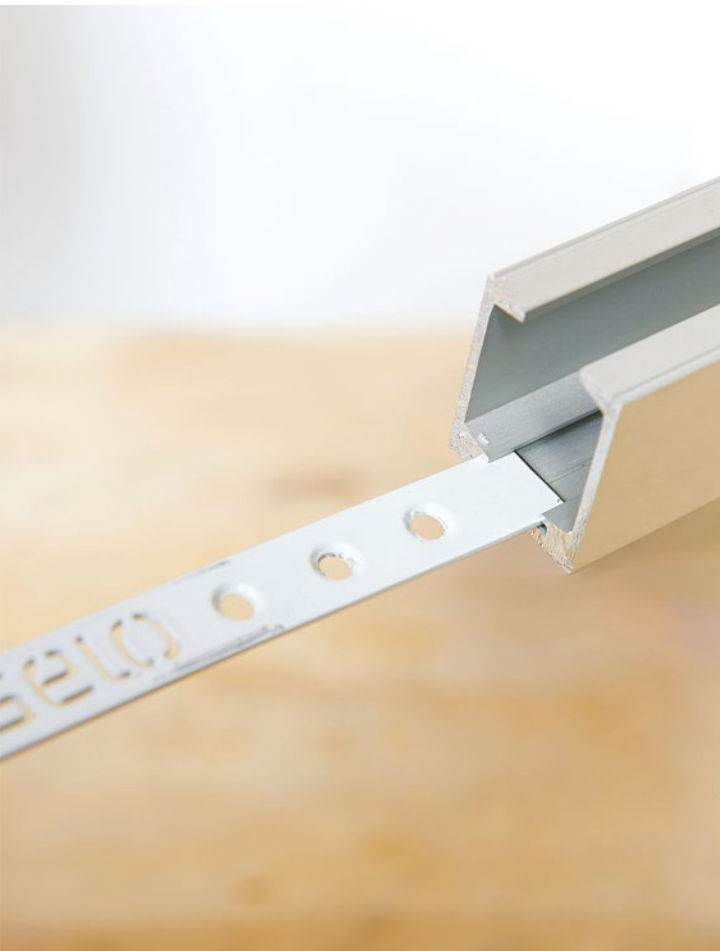
HEAD CHANNEL PREPARATION

Mark the **Head Channel** to ensure space for installation of the running gear. This end will be installed at the **Strike end** of the structural opening.

A. Mark **2 15/32"** from the end.

B. Align the end of **Sliding Track** to the marks, ensuring it is centered to the **Head Channel** width. Mark the **Sliding Track Holes**.

C. Remove the **Sliding Track** and drill the **Head Channel** with a **13/64"** drill bit.



INSERT THE REMOTE-STOP

Depending on options chosen at time of purchase, **some kit types may not require a Remote-stop** and others may require a shorter Trigger Arm version, so a Remote-stop may not be supplied.

If a **short Trigger Arm** has been supplied then refer to the Soft Close/Open instructions.

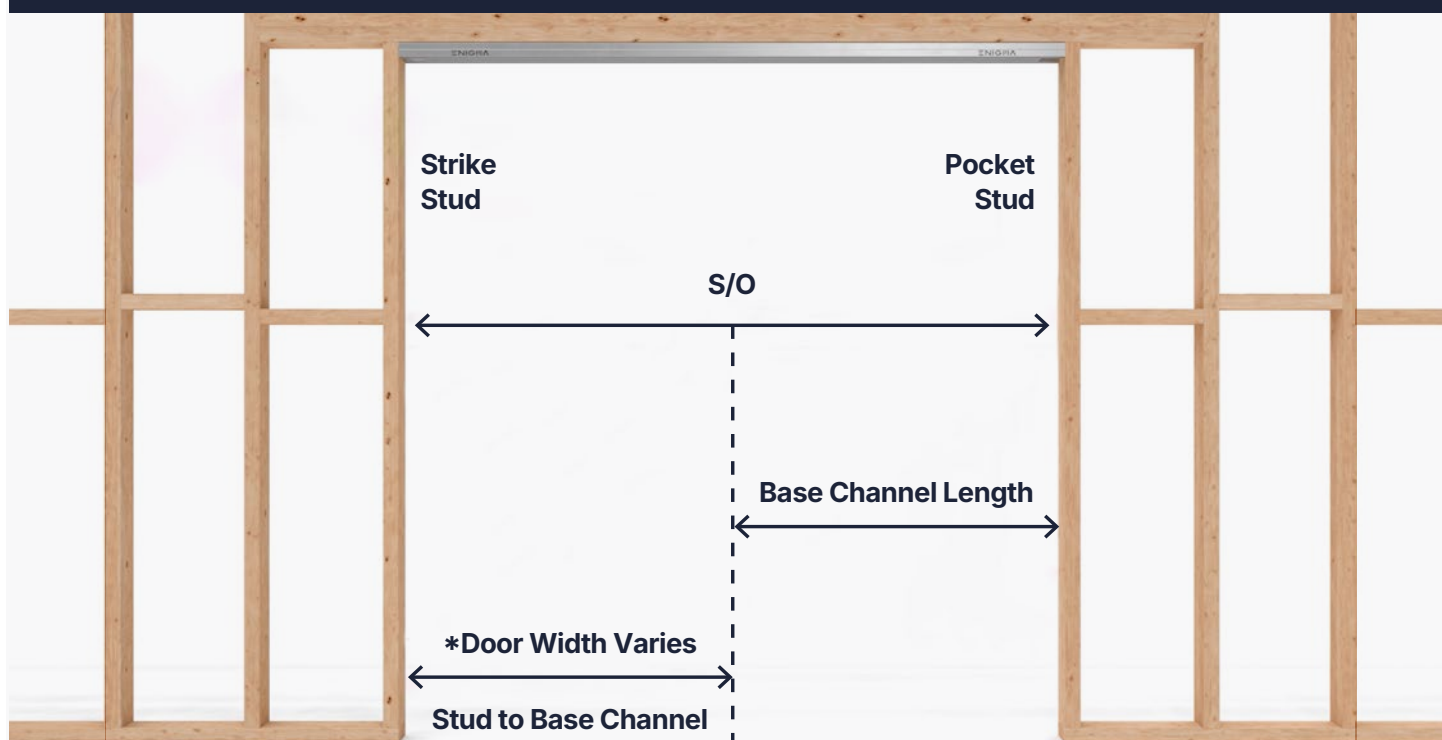
If a **Remote-stop** has been supplied, slide the Remote-stop into the **Sliding Track**, metal end first, followed by the white plastic block, ensuring the white plastic block is located at the rear of the track and in the pocket (this is to keep the components safe until the track is installed later).



FIT HEAD CHANNEL

Put the **Head Channel** in place and fix using **Type-02** screws. The end with 2 31/64" marked butts against the strike stud.

CALCULATE LENGTH OF BASE CHANNEL

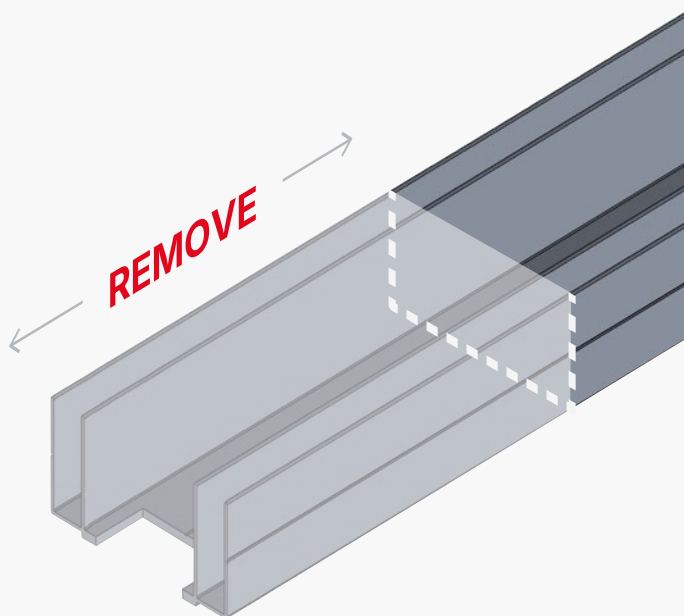


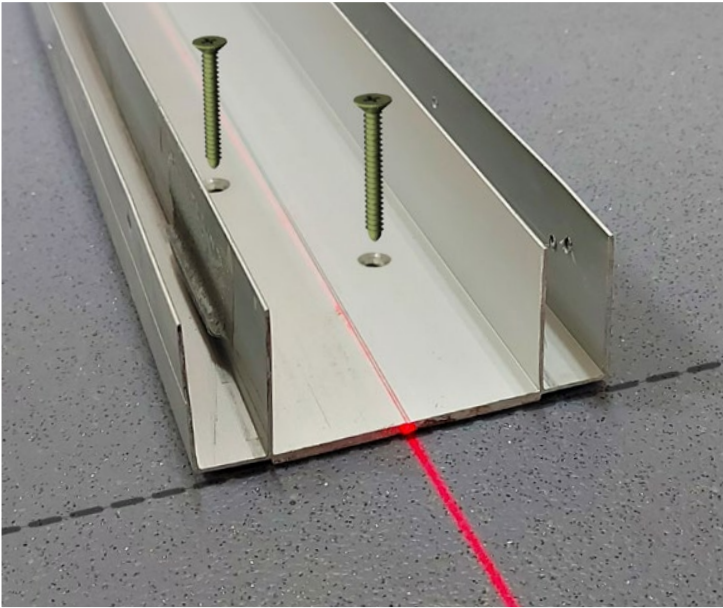
IMPORTANT If provided with a cut-to-size system, skip to the fixing step.

CUT THE BASE CHANNEL TO SIZE

As shown above, mark a line on the floor by measuring the ***width of the door +1 1/8"** from the **Strike Stud**.

From this mark, measure the remaining distance from the **Pocket Stud**, cut the **Base Channel** to this dimension, cutting off the end with the notch as shown.





LINING UP & FIXING BASE CHANNEL

Place the **Base Channel** on the floor between the line marked in the previous step and the rear stud. At this stage it is vital that care is taken to ensure that the center line of the **Base Channel** is in line and plumb with the **Head Channel**. Any deviation in this alignment will result in misaligned doors and trims.

Secure to the floor using appropriate fixings.



CUT LEADING EDGE & INTERMEDIATE JAMB

Cut the correct end to **ensure left/right handed notches** are kept.

Cut the **Leading Edge Jamb** and **Intermediate jamb** $19/32''$ less than the structural opening height.



CUT & FIT INTERMEDIATE TIMBER INSERT

Cut the **Timber inserts** $3\ 15/32''$ shorter than the aluminum jamb and slide the insert into the **Leading Edge** and **Intermediate Jamb** so it sits $1\ 31/32''$ from each end.

IMPORTANT

When using door leafs wider than 3' the kit will be supplied with extra intermediate jambs to be fitted equally spaced within the pocket width.

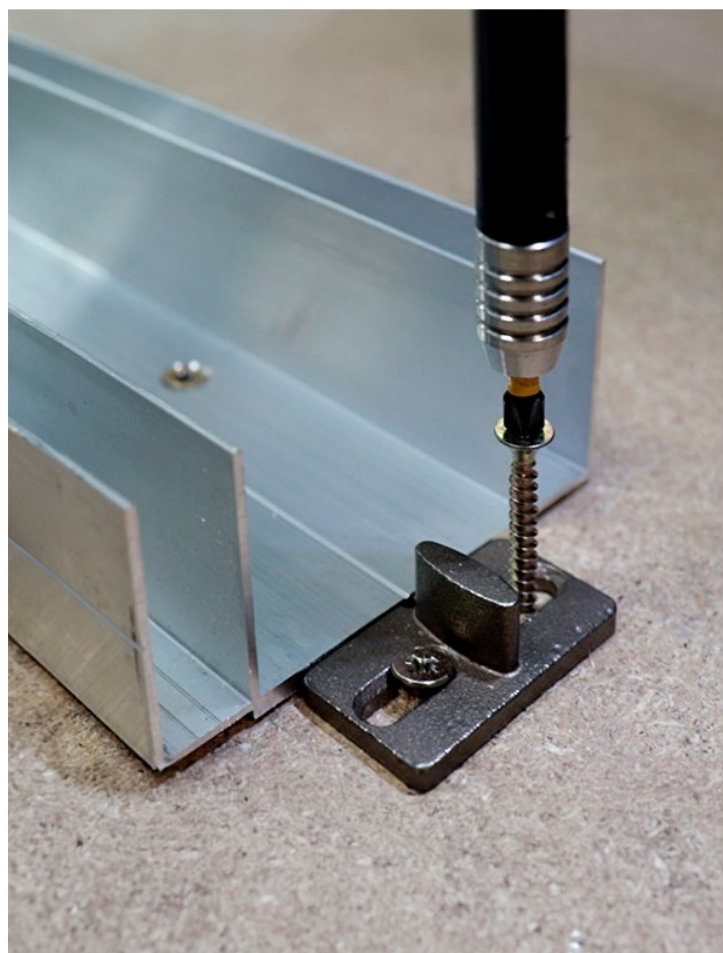


FIT POCKET SIDES & FIX THE JAMB

A. Slide the **Intermediate jamb** into the **Head Channel** and **Base Channel** with the **Timber inserts** facing out so it is equally spaced within the pocket. Fix using **Type-01** screws.

B. Slide the **Leading Edge Jamb** into **Base Channel** with notched end at the top, so the flange sits hard against the end of the **Base Channel**.

Plumb the jamb and fix into place using one **Type-01** screw top and bottom as shown in the image. Must be posited furthest from the opening.



FIT DOOR GUIDE PIN

Place the **Door Guide Pin** at the front end of the **Base Channel**, ensure the notch is aligned to the center of the **Base Channel**.

Fit the **Door Guide Pin** at the finished floor level with fixings suitable for substrate. Use suitable packers to pack-up the pin.

IMPORTANT

The pin needs to be fitted at FFL (finished floor level). If the finished floor is not yet installed, fitment of the floor pin can be delayed until the flooring is completed.



FIT THE GUIDE CHANNEL

Apply a thin bead of adhesive into the groove in the bottom of the Doors and then tap the Plastic Channels into position.



FIT BRUSH STRIP

If using a **Self Closer** skip this step.

Cut the **Brush Strip** to length and fit to the leading edge aluminium profile.



ADD ENHANCEMENTS AND/OR TRIM

This concludes the first steps of

Part 1 Frame Installation

Please refer to the following guides to complete your Pocket Door installation:

Part 2 Enhancements

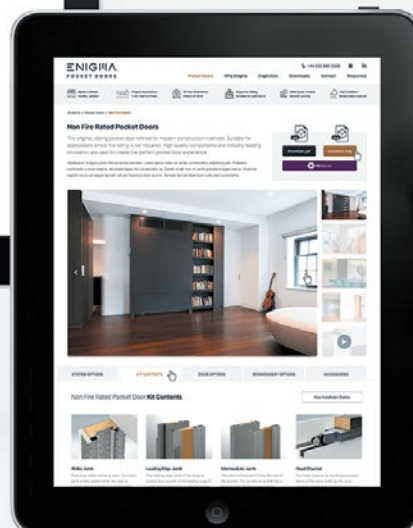
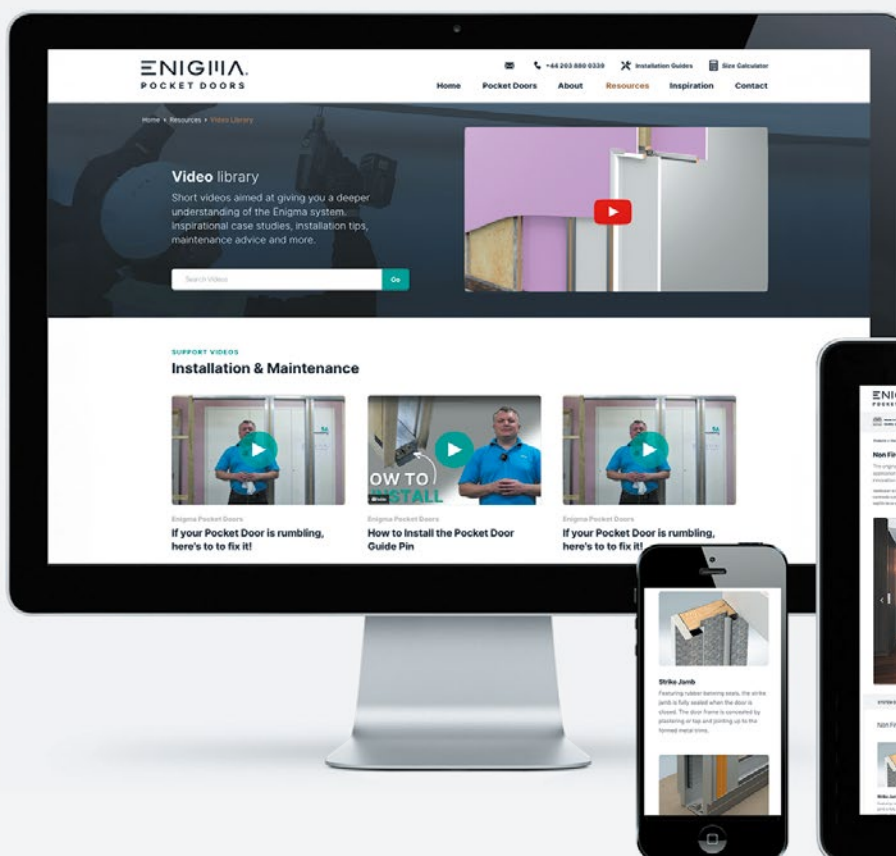
Part 3 Trim Installation



ENIGMA[®]
POCKET DOORS

Highly durable, low maintenance,
elegant pocket doors.

www.enigmapocketdoors.com



halo
assist

INNOVATION BY SELO.

Installation support **+18443 (ENIGMA) 364462**

Email support@enigmapocketdoors.com