

**ENIGMA**<sup>®</sup>  
POCKET DOORS

# Soft Close & Open

## Installation Guide

SEL-PRT-02597 | Rev. 1

SUITABLE FOR

**EI30 Concealed Frame**

**EI30 Shadow-Gap**

**EI30 Visible Trim**

**NFR Concealed Frame**

**NFR Shadow-Gap**

**NFR Visible Trim**



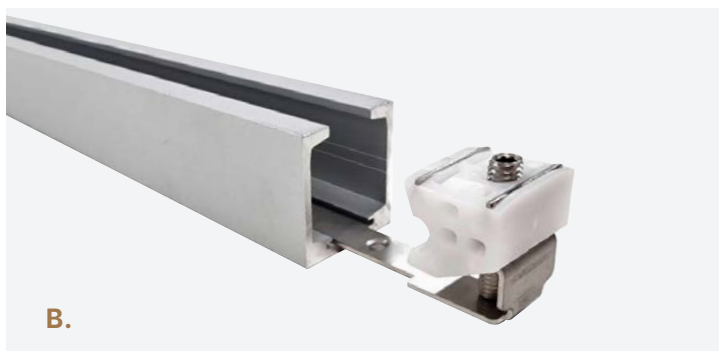
### **Part 2** Enhancement Installation

This installation guide is to be used in conjunction with the other configurable options, depending on the specification.



# Soft Close & Open installation

Familiarize yourself with components included. All fixings will come pre-packaged to suit your specific project requirements.



## INSERT THE TRIGGER ARM

**A.** Identify the **Trigger Arm** and the **Plastic End Buffer** (components supplied separately). Slide the threaded bolt through the top hole of the Trigger Arm into the Plastic End Buffer as shown.

**B.** Slide the **Trigger Arm** into the **Track** as shown, ensuring the Plastic End Buffer is located at the **rear of the Pocket**.



## INSTALL SLIDING TRACK

Line the **Top Track** with the pilot drilled holes and fix using **Type-03 Screws**.

**Only use the silver Type-03 Screw provided to secure the Track into place.** Use of a larger Screw will prevent the Trigger Arm from sliding freely within its groove. It will be necessary to slide the Trigger Arm back and forth to access all the fixing holes in the Track.

### IMPORTANT

**Do NOT fix the Trigger Arm in place at this stage.**



## CLEAN TRACK

Clean the **Track** with a damp cloth or a water-based wipe to ensure there is no debris in the Track. **Failing to do so will harm the function and dramatically reduce the lifespan** of the product.

### IMPORTANT

If the wheels are making a rumbling noise when in use then the Track is not clean. Do not apply grease or oil but remove the Carriages and inspect the Track and wheels for debris.



## POCKET PACKER

In order to support the Pocket sides before drywalling, insert the cardboard **Pocket Packer** into the Pocket as shown.

### IMPORTANT

The cardboard Pocket Packer must be used to stop the side walls bowing when fixing drywall to the Pocket.



### DRYWALL ONE SIDE

Drywall **one side** of the Pocket using the **Type-05** self drilling Screws provided. **Ensure the Leading Edge Jambs remain completely vertical and plumb.**

Only one side is drywalled to allow access to the **Track** to adjust Door positions etc. Use a damp cloth to **clear any debris** from the **Top Track** and **Bottom Channel**.



### FIT HEAD BRACKETS

#### A. Shadow Gap NFR/EI30

#### Visible NFR/EI30 & Concealed EI30 Kits

Fit the head Brackets **5 29/32 inches** from the edge of the Door leaf to center of the Bracket, ensuring both Brackets are the same way up. Use **Type-03** Screws.



#### B. NFR Concealed Kit ONLY

Fit the head Brackets in the rebates provided in the Door head with the **Type-03** Screws. The longer Bracket is used at the front of the Door.

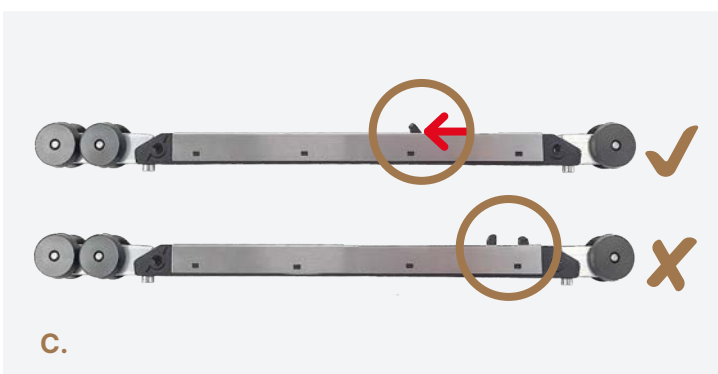


### FIT THE GUIDE CHANNEL

Cut the **Plastic Channel** to the same length as the Door.

Apply a thin bead of adhesive into the groove in the bottom of the Door, tap the Plastic Channel into position.





## ASSEMBLE RUNNING GEAR

### A. Shadow Gap NFR/EI30

**Visible NFR/EI30 & Concealed EI30 Kits** Screw the Bolts into the **Trolley** several turns, then insert the Trolley into the **Track**. Adjust the Bolts to achieve a gap approximately **25/32 inches** between the underside of the Track and the top of the Bolt.

### B. NFR Concealed Kit ONLY

Force the **Hanger Bolt** into the **Gear Bracket** using a mallet or hammer. This will hold the Bolt captive in the Bracket, then wind several turns into the Trolley and insert into the Track.

### C. IMPORTANT

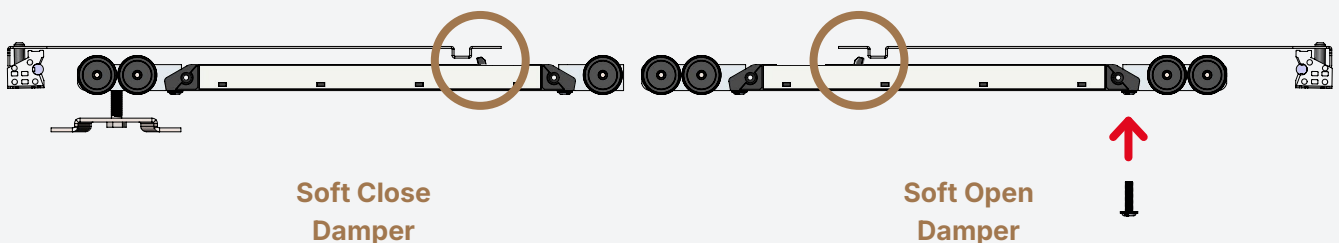
Ensure the **Dampers** are **activated** before sliding into the **Track**. To activate, slide the Lugs back into the primed position as shown.

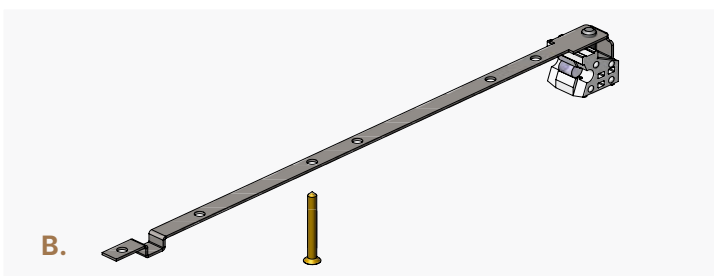
**D.** Using the illustration below for reference, slide the **Soft Open** Damper into the Track and fix in place using the **Bolt closest to the rear of the Pocket**. Ensure the Actuator Lugs are towards the **middle** of the Track as shown. Once in place, slide the **Soft Close** Damper into the Track ensuring the Actuator Lugs are towards the **middle** of the Track.

To **remove or retro-fit** the Soft Open assembly, the Damper is connected via the Bolt closest to the rear of the Pocket.

◀ Strike Side

Pocket Side ▶



**NFR Concealed Kit ONLY****HANG THE DOOR****NFR Concealed Kit ONLY**

**A.** Slide the rear Bracket into the head of the Door, fix through the bottom holes with two **Type-02** Screws.

**B.** Slide the front Bracket into place and tighten the hex-head Bolt. Fit the Bracket end cap (can be removed and refitted for painting).

Ensure the Door is **plumb and level**. To adjust the heights, remove the Brackets and rotate them clockwise to raise, anti-clockwise to lower.

**Shadow-Gap & Visible Trim Kits**

Attach the Brackets to the top of the Door, **5 29/32 inches (centers)** from either end.

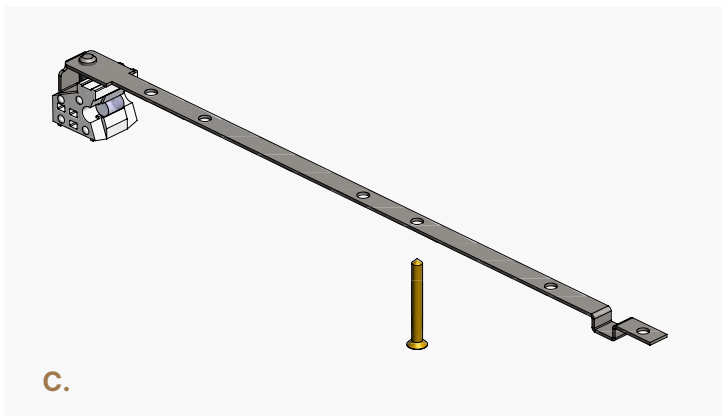
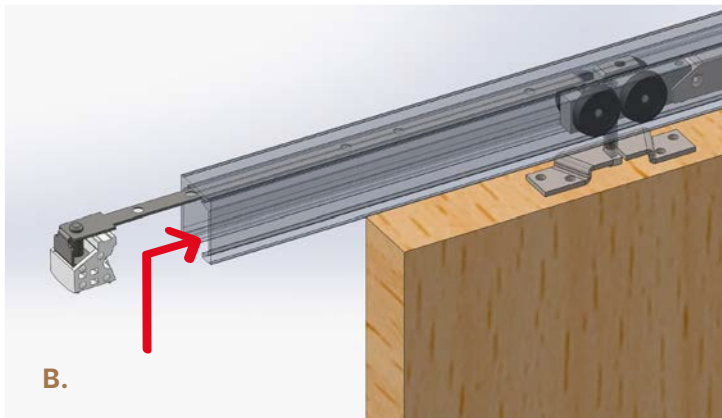
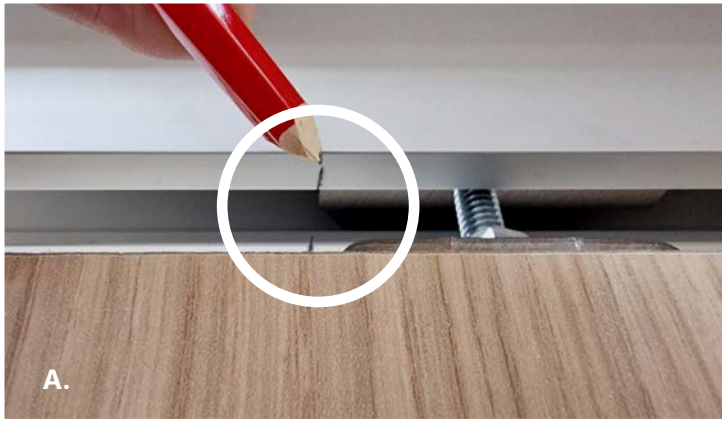
The Door Brackets hang from the Trolley Bolts (Image **C.**) Feed the Door into the Pocket, at least halfway, hanging the rear Bracket first. Using the spanner provided, adjust the Bolt clockwise to raise, anti-clockwise to lower to ensure the Door is **plumb and level**.

Wind-down the nuts by hand to hold the Brackets and reduce movement, these can be finally adjusted later.

**FIX REAR TRIGGER ARM**

**A.** Cut a **Leading Edge Trim** to length, offer it up to the leading edge jamb. Carefully slide the Door back into the Pocket to the desired stop position. Ensure the **rear Trigger Arm does not clash with the carriage** (temporarily fix if needed). Pencil mark on the Track where the wheels stop, the Plastic End Buffer on the Trigger Arm will be fixed here.

**B.** Slide the Door back into the opening to gain access to the Trigger Arm location and fix using a **single Screw** to hold it in place.



## FIX FRONT TRIGGER ARM

For **Single Doors**, cut the **Strike Trim** to height and offer it up to calculate the stopping position of the Door.

For **Double Doors**, slide the two Doors to the desired closed position.

**A.** With the Strike Trim held in location, or with the Double Doors in position, **mark where the wheels stop in the Track**. Directly in front, butted-up to the wheels is where the Plastic End Buffer of the **Trigger Arm** should be fixed.

**B.** Open the Door to gain access to the opening. Locate the **Trigger Arm** and the **Plastic End Buffer** (components supplied separately). Slide the threaded bolt through the top hole of the Trigger Arm into the Plastic End Buffer. Insert into the Track as shown with the **Plastic End Buffer** at the **Strike-end**.

**C.** Once in the correct location, temporarily fix the **Actuator Strap** (to allow adjustment) using **one** of the fixings provided in the **Screw Pack**. Final fixings are added later.

### IMPORTANT

Clean the Track after drilling and/or moving the Door back and forth as debris will damage the wheels.



## TEST BEFORE DRYWALLING

Test the action of the Door taking extra care when activating the soft action components as these are not fully fixed yet.

### IMPORTANT

Ensure the Door starts/stops in the correct place. Once happy with the desired action, fix the Trigger Arm(s) in place using the Screws provided to all the remaining empty holes.

Drywall the remaining side to fully enclose the Pocket. Ensure that the upright Jamb is kept level and plumb.





## FIT END BLOCK

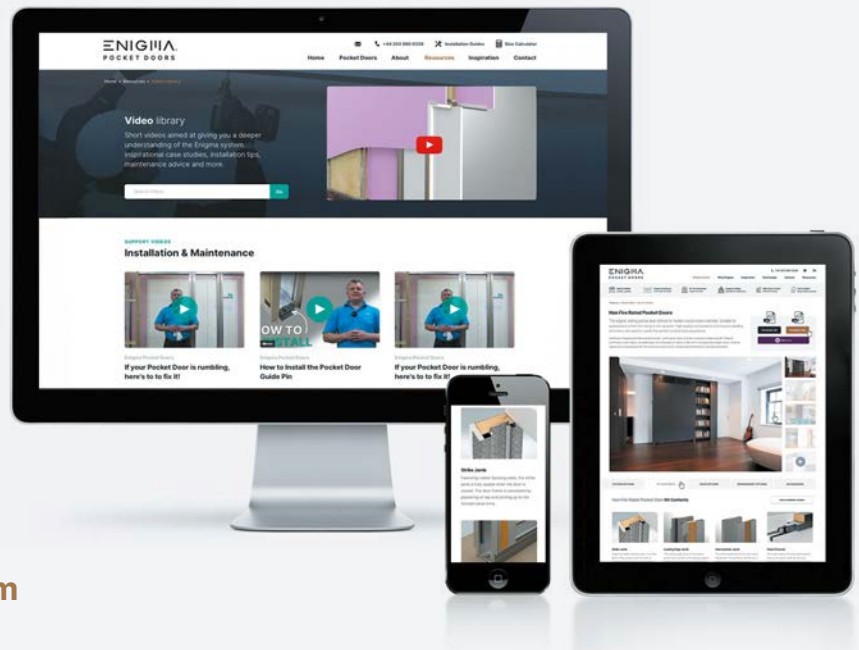
The Track End Block fits at the end of the Track for a single Door and in the middle of the two Tracks for a double Door.

First drill a pilot hole and fix the Block into place using the **Type-10** Screw.

**ENIGMA**  
POCKET DOORS

The Pocket Door  
**Movement™**

Save *Space*.  
Improve *Accessibility*.  
Increase *Value*.



[www.enigmapocketdoors.com](http://www.enigmapocketdoors.com)

halo  
assist

INNOVATION BY SELO.

Installation support **+18443 (ENIGMA) 364462**

Email [support@enigmapocketdoors.com](mailto:support@enigmapocketdoors.com)