

ENIGMA
POCKET DOORS

Standard Frame

Installation Guide

SEL-PRT-02590 | Rev. 1

SUITABLE FOR

EI30 Visible Trim

EI30 Shadow-Gap

EI30 Concealed Frame

NFR Visible Trim

NFR Shadow-Gap



Part 1 Frame Installation

This installation guide is to be used in conjunction with the other configurable options, depending on the specification.



Thank you for choosing Enigma

To ensure the installation process is simple and efficient, we recommended you read this guide in full first.

Specific tools are also required to complete the installation:



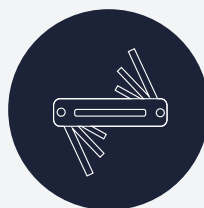
Pencil



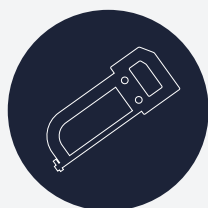
Tape Measure



Knife



Hex Keys (metric)



Hacksaw / Tin-snips



Laser Level



Cordless Screwdriver



Power Chop Saw

Fire certification guidance

IMPORTANT

If fitting a fire-rated kit with a fire-rated lock or fire-rated flush door handle please refer to the field of application for intumescent detail, or contact Selo:

We are the only doorset manufacturer to offer Halo Assist™ providing you with dedicated project support at every stage.

call 020 3880 0339

halo
assist

Getting started

Before you start installation ensure you have read and understood the instructions.

DELIVERY

The Enigma pocket door system will be delivered in at least two boxes. One is the pocket frame and the other is the trim surround.

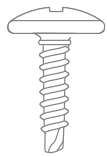
If a door leaf has been ordered this will come separately.



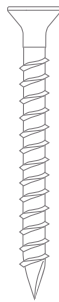
Standard frame kit contents

Familiarise yourself with components included. All fixings will come pre-packaged to suit your specific project requirements.

FRAME FIXINGS



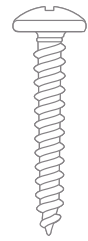
Type-01 - 4.2×13.5mm
Wafer Head
Self Drilling
SEL-PRT-00685



Type-02 - 4.5×40mm
Countersunk Pozi Single Slash
Wood Screws
SEL-PRT-00686



Type-03 - 4×50mm
Countersunk Pozi
Wood Screws
SEL-PRT-00687



Type-04 - 4×30mm
Cross Round Head Pozi
Wood Screws
SEL-PRT-00688

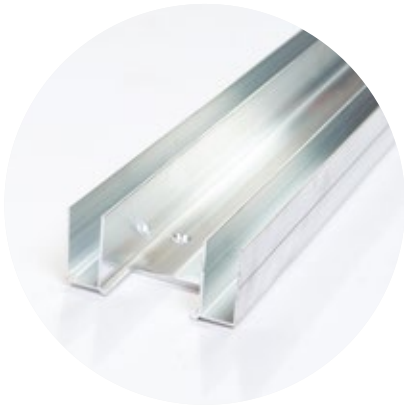


Type-05 - 3.5×25mm
Bugle Head Phillips
Self Drilling
SEL-PRT-00689

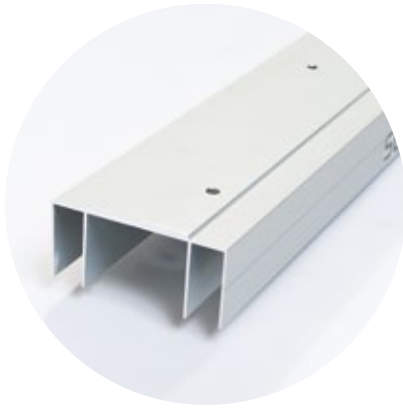


Type-09 - 5×50mm
Countersunk Pozi Single Slash
Wood Screws
SEL-PRT-00693

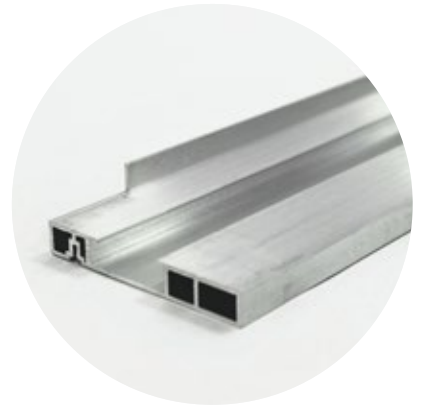
SYSTEM COMPONENTS



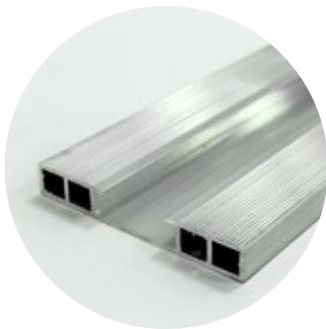
Base Channel



Head Channel



Leading Edge Jamb



Intermediate Jamb



Timber Insert



Sliding Track



Pocket Packer



Remote-stop*



Door-guide Pin & Channel



Sliding Gear Set*



Brush Strip

*Components may vary depending on options chosen.

Wall construction preparation

The Enigma system can be fitted to steel or timber studwork partitions. If using steel you must ensure the head stud is strong enough to take the door weight.

IMPORTANT INSTALLATION NOTES

1. Studwork size

The studwork size required is **94mm**.
If using steel studs a 94mm head and base track and 92mm uprights should be used.

2. Steel studs

If using steel studs, timber inserts are required within the studs to provide additional strength.

3. Doors above 2300mm

If the door height you are installing is above 2300mm then using 2 layers of plasterboard is recommended. This applies to Concealed frame NFR, Visible frame NFR and Visible frame EI30. To order kits to suite two layers of plasterboard add 'Double board' to the product code.

4. Allow for Accessories

If you are using an accessory such as a **Soft Close/Open**, **Touch Latch** or **Simultaneous Opening** etc, please ensure you familiarise yourself with these instructions first.

5. Self-supporting Head

For situations where you cannot fix to the ceiling or soffit then use the Enigma Self-supporting Head installation detail.

Follow standard Enigma instructions to calculate your studwork structural opening and add the following dimensions: **Width +94mm** and **Height +220mm**.

Ensure you refer to the specific Self-supporting Head installation instructions for further details. For all sizes (Structural opening, clear opening, and door leaf size) please refer to the Enigma door schedule.

Bespoke requirements?

Enigma can be customised to suit bespoke projects. In principle, the installation process remains the same, however certain installation dimensions may differ. Please contact the Selo team to discuss your bespoke requirements.



STRENGTHEN HEAD

When constructing your stud partition, please ensure the head is strong enough to take the weight of the sliding door that will hang from it.

IMPORTANT

If using a Self-supporting Head please refer to those specific installation instructions.

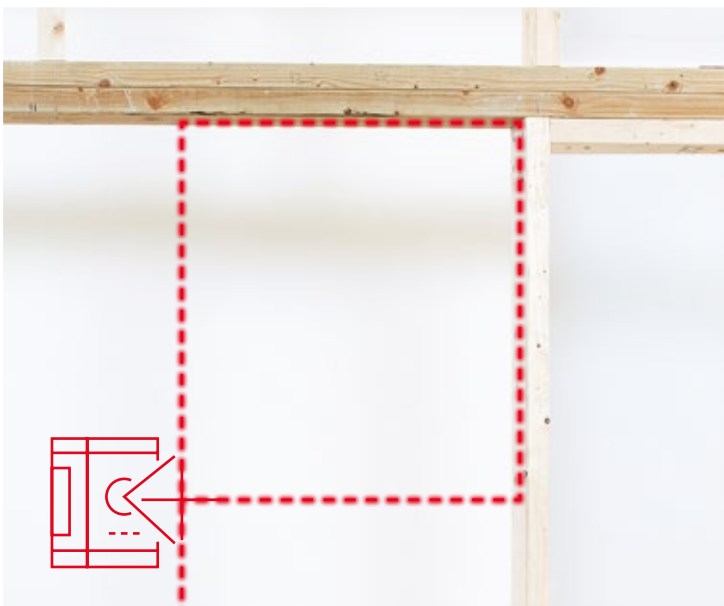


CHECK SIZE WITH SCHEDULE

When forming the structural opening, please ensure you are working to the correct opening size provided on the door schedule.

IMPORTANT

If using a Self Closer please refer to those specific installation instructions.



LEVEL-UP

Ensure the opening is square and plumb.

IMPORTANT

We strongly recommend the use of a laser level for setting out.

Frame installation

Head Channels may be made up in multiple lengths for wider kits.
Clean any cuts and wipe with a wet cloth to remove any swarf.



PREPARE HEAD CHANNEL & SLIDING TRACK

Single Door

A. Cut the **Head Channel** to suit the structural opening width.

If **Self-supporting Head** is being used, cut the **Head Channel** to structural opening **less 94mm**.

B. Remove the **Remote-stop**, from the **Sliding Track**, then cut the **Sliding Track** to the **Head Channel** width, **less 80mm**.

Double Doors

A. Measure the structural opening width, divide in half and cut two **Head Channels** to those lengths.

If a **Self-supporting Head** is being used **subtract 94mm** from the structural opening, divide this in half and cut the **Head Channels** to this length.

B. Remove the **Remote-stop**, from the **Sliding Tracks**, then cut the **Sliding Tracks** to the **Head Channel** widths, **less 40mm**.



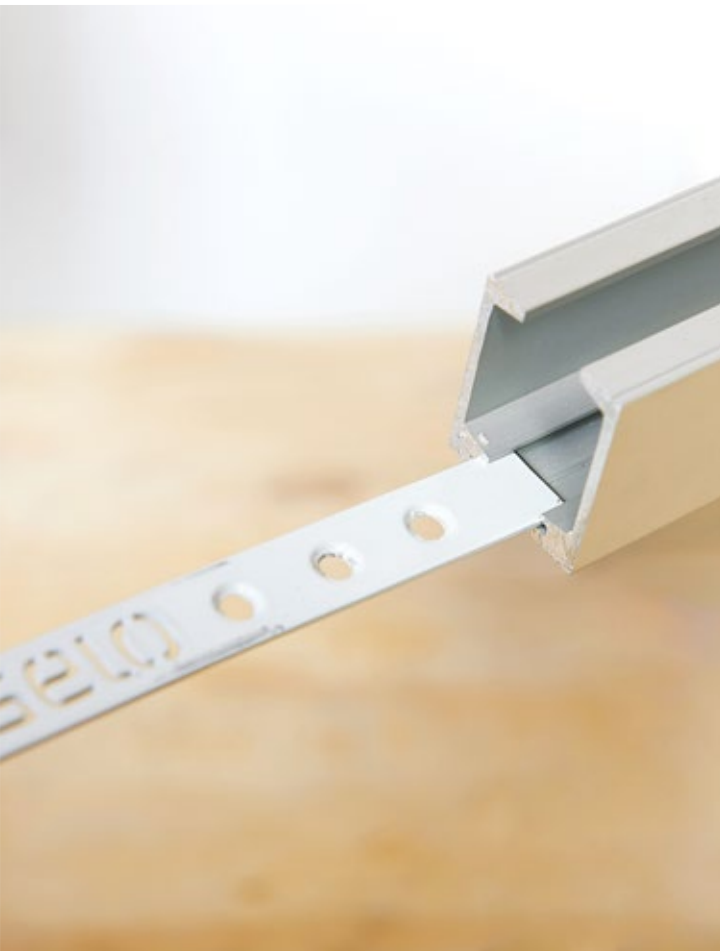
HEAD CHANNEL PREPARATION

Mark the **Head Channel** to ensure space for installation of the running gear. This end will be installed at the **Strike end** of the structural opening, or in the middle for **Double Doors**.

A. Single Door mark **75mm** from one end, **Double Doors** mark **30mm** from one end of both the longer channel lengths.

B. Align the end of **Sliding Track** to the marks, ensuring it is centred to the **Head Channel** width. Mark the **Sliding Track Holes**.

C. Remove the **Sliding Track** and drill the **Head Channel** with a **5mm** drill bit.



INSERT THE REMOTE-STOP

Depending on options chosen at time of purchase, **some kit types may not require a Remote-stop** and others may require a shorter Trigger Arm version, so a Remote-stop may not be supplied.

If a **short Trigger Arm** has been supplied then refer to the Soft Close/Open instructions.

If a **Remote-stop** has been supplied, slide the Remote-stop into the **Sliding Track**, metal end first, followed by the white plastic block, ensuring the white plastic block is located at the rear of the track and in the pocket (this is to keep the components safe until the track is installed later).



FIT HEAD CHANNEL

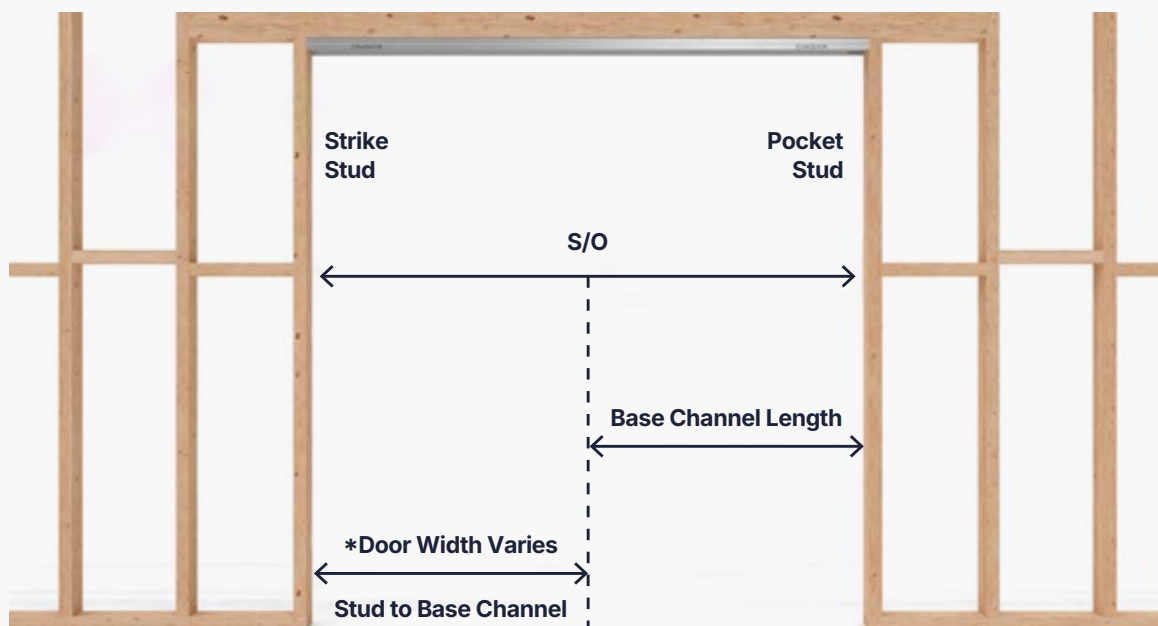
Single Door

Put the **Head Channel** in place and fix using **Type-02** screws. The end with 75mm marked butts against the strike stud.

Double Doors

Butt the ends of the **Head Channels** marked **30mm** from the end together in the centre of the structural opening width and fix using **Type-02** screws.

CALCULATE LENGTH OF BASE CHANNEL



IMPORTANT

If provided with a cut-to-size system, skip to next step.

Single Door NFR

As shown above, mark a line on the floor by measuring the ***width of the door + 29mm** from the **Strike Stud**. From this mark, measure the remaining distance from the **Pocket Stud**, cut the **Base Channel** to this length.

Double Doors NFR

Mark a line on the floor at the centre between the two studs, measure back on both sides the ***width of the door + 12mm**. From these marks, measure the remaining distance from the **Pocket Studs**, cut the **Base Channel** to this length.

Single Door EI30

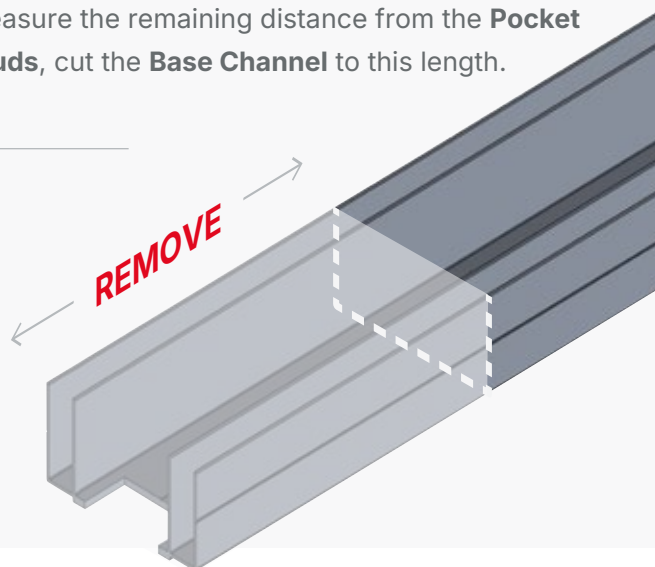
As shown above, mark a line on the floor by measuring the ***width of the door + 5mm** from the **Strike Stud**. From this mark, measure the remaining distance from the **Pocket Stud**, cut the **Base Channel** to this length.

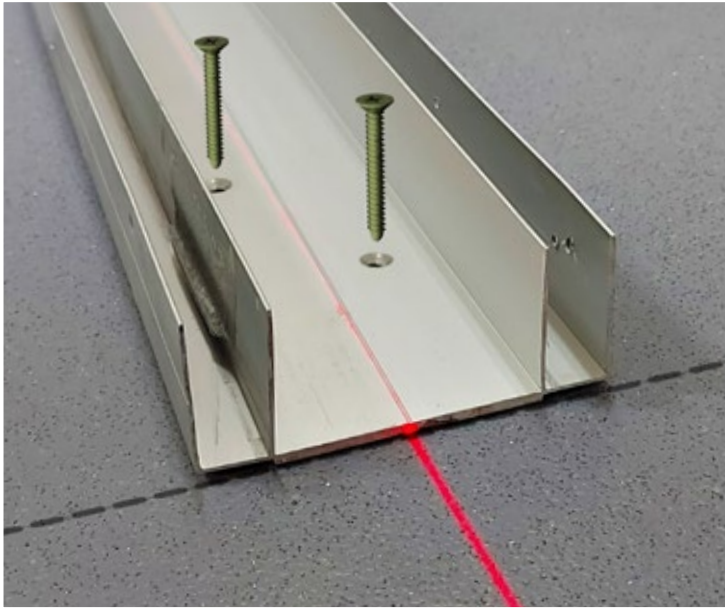
Double Doors EI30

Mark a line on the floor at the centre between the two studs, measure back on both sides the ***width of the door - 12mm**. From these marks, measure the remaining distance from the **Pocket Studs**, cut the **Base Channel** to this length.

Cutting Base Channel to size

Cut the **Base Channel** to this dimension, cutting off the end with the notch as shown.





LINING UP & FIXING BASE CHANNEL

Place the **Base Channel** on the floor between the line marked in the previous step and the rear stud. At this stage it is vital that care is taken to ensure that the centre line of the **Base Channel** is in line and plumb with the **Head Channel**. Any deviation in this alignment will result in misaligned doors and trims.

Secure to the floor using appropriate fixings.



CUT LEADING EDGE & INTERMEDIATE JAMB

Cut the correct end to **ensure left/right handed notches are kept**.

Cut the **Leading edge jamb** and **Intermediate jamb 15mm less** than the structural opening height.



CUT & FIT INTERMEDIATE TIMBER INSERT

Cut the **Timber inserts** 100mm shorter than the aluminium jamb and slide the insert into the **Leading Edge** and **Intermediate Jamb** so it sits 50mm from each end.

IMPORTANT

When using door leaves wider than 926mm the kit will be supplied with extra intermediate jambs to be fitted equally space within the pocket width.

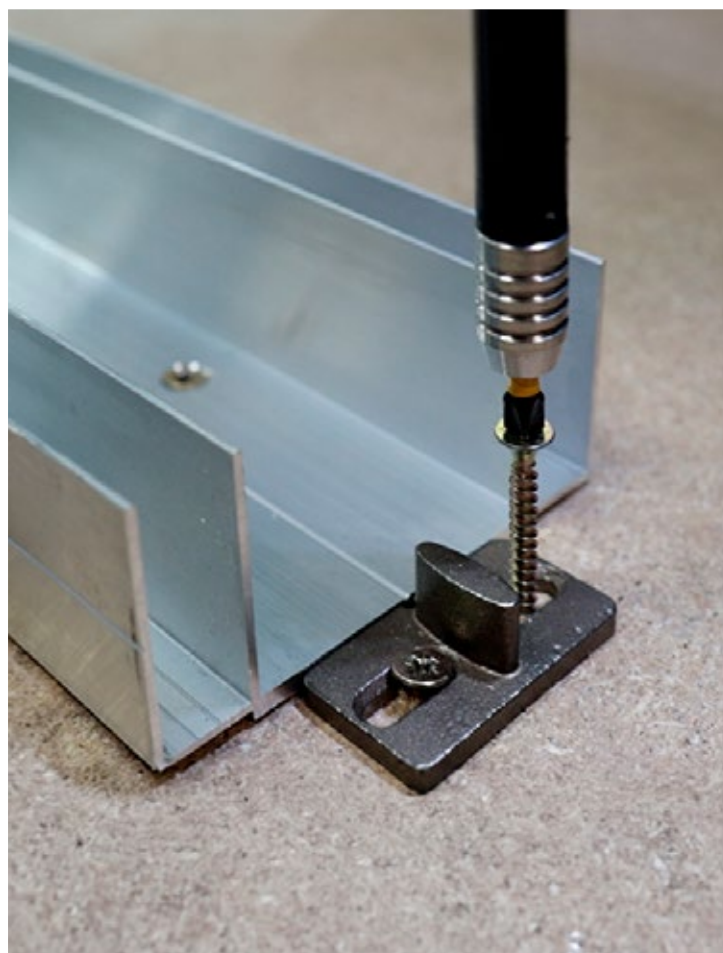


FIT POCKET SIDES & FIX THE JAMB

A. Slide the **Intermediate jamb** into the **Head Channel** and **Base Channel** with the **Timber inserts** facing out so it is equally spaced within the pocket. Fix using **Type-01** screws.

B. Slide the **Leading Edge Jamb** into **Base Channel** with notched end at the top, so the flange sits hard against the end of the **Base Channel**.

Plumb the jamb and fix into place using one **Type-01** screw top and bottom as shown in the image. Must be posited furthest from the opening.



FIT DOOR GUIDE PIN

Place the **Door Guide Pin** at the front end of the **Base Channel**, ensure the notch is aligned to the centre of the **Base Channel**.

Fit the **Door Guide Pin** at the finished floor level with fixings suitable for substrate. Use suitable packers to pack-up the pin.

IMPORTANT

The pin needs to be fitted at FFL (finished floor level). If the finished floor is not yet installed, fitment of the floor pin can be delayed until the flooring is completed.



FIT THE GUIDE CHANNEL

Apply a thin bead of adhesive into the groove in the bottom of the Doors and then tap the Plastic Channels into position.



FIT BRUSH STRIP

If using a **Self Closer** skip this step.

Cut the **Brush Strip** to length and fit to the leading edge aluminium profile.



ADD ENHANCEMENTS AND/OR TRIM

This concludes the first steps of

Part 1 Frame Installation

Please refer to the following guides to complete your Pocket Door installation:

Part 2 Enhancements

Part 3 Trim Installation



The Pocket Door ***Movement***[™]

Save Space. Improve Accessibility. Increase Value.

www.enigmapocketdoors.com

