

Double Mitred Frames

Installation Guide

SEL-PRT-00801 | Rev. 2

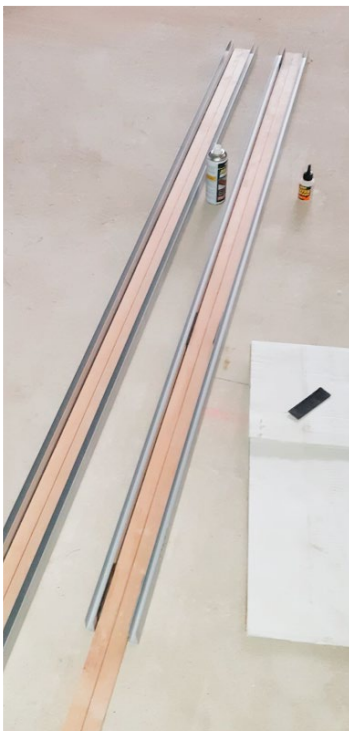
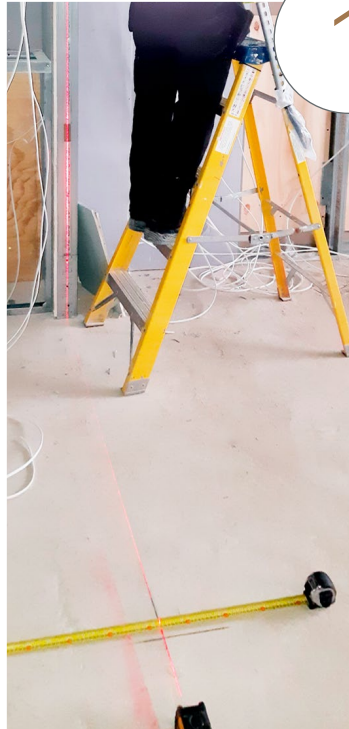
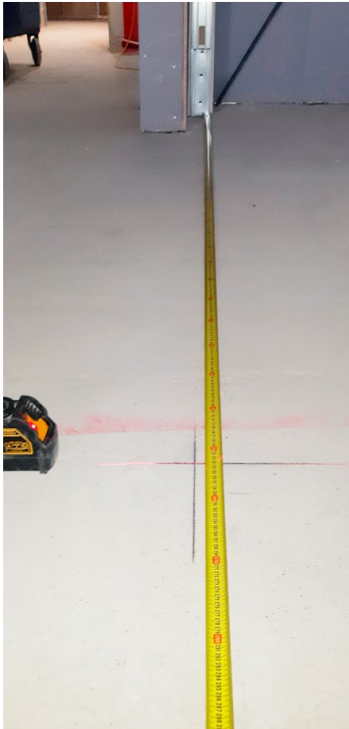
1

MARKING-OUT

Mark a cross-hair on the floor at central point of where the Head Studs meet.

IMPORTANT

This needs to be accurate as it is an important datum.



2

HEAD CHANNEL PREPARATION

Layout both Head Channels and the two widest Ply Strips.

Centre-up and glue the Ply Strips into the Head Channels with the centre line of the wood facing upwards.

3

FIX TRACKS TO CHANNELS

Centre-up the Tracks and use 2x Tek screws (one at either end of the Track) to screw the whole configuration securely together.

Grind off protruding ends of the screws.

4

PILOT DRILL

Use 6mm Drill-bit to pilot all the way through the remaining Track fixing holes.

5

MARK CUTS

Lay each assembled unit on its back. Mark 45 degrees and cut as required.

IMPORTANT

Care must be taken to keep cuts tidy (don't use an axe). File to remove burrs.

6

FIXING THE FIRST TRACK



Trim the un-mitred ends to length and fix the first, longer unit to the Head Stud with the Type-3 screws.

IMPORTANT

Once fixed, remove the initial 2x Tek screws, pilot and fix into Head Stud.

7

CLEAN THE TRACK



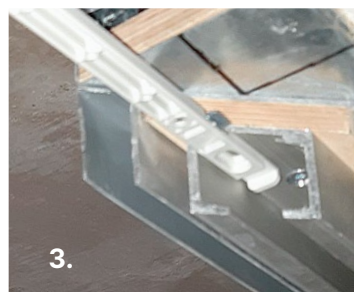
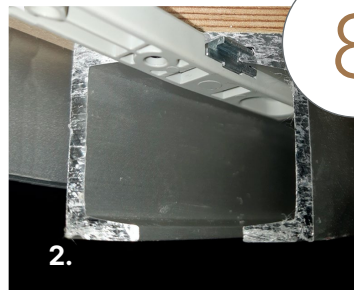
It is important at this stage to remove any swarf or debris from the Track. Failure to clear the tracks results in a 'rumbling' during operation.

IMPORTANT

Use water wipes only.

8

ADD SOFT CLOSER



Add the Soft Close as per the associated instructions. Components to be installed in the following order:

1. Trolley
2. White Buffer
3. Actuator Arm

Check operation to ensure is correct.

9

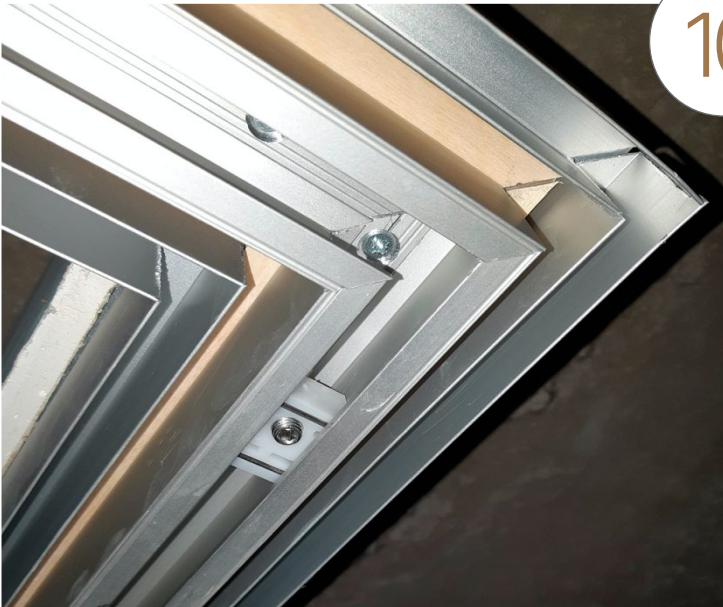
ADD REMOTE STOP TO SECOND TRACK



Add the Remote-stop into the groove of the smaller second Track with the White Buffer located away from the mitred end.

10

INSTALL SECOND TRACK



Repeat Steps 6-8 to install the smaller second Track to the Head Stud.

IMPORTANT

It will be necessary to slide the Remote Stop back and forth to access the hidden fixing holes.

11

FIT BASE CHANNEL



Using the floor cross-hair as a datum, mark-up the front positions of the Base Channels on the floor with reference to the bespoke installation drawings.

Cut each Base Channel to length using the floor mark and the Rear Stud, laser up accurately with the centre line of the tracks, and fix, screw, glue to the floor.



12

INSTALL VERTICAL JAMBS

Cut the Vertical Jambs to length and screw into position with the Pan-head Screws.



13

FIT THE PACKER

In order to support the pocket sides before plasterboarding, insert the Pocket Packer into the pocket.

IMPORTANT

The Packer is removed once plastered so ensure access can be made.



14

PLASTERBOARD THE WALL

Plasterboard over the pocket along with the rest of the wall using the Type-5 self drilling screws provided. It is vital to ensure the Leading Edge Jambs remain completely vertical and plumb once boarded.

The Pocket Door *Movement*[™]

Save Space. Improve Accessibility. Increase Value.

www.enigmapocketdoors.com

