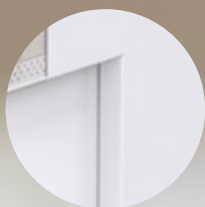


ENIGMA®

SLIDING POCKET DOORS

Installation Guide

selo



NFR C



Telescopic | Concealed Trim

January 2023 | Revision E

SEL-PRT-00781

Thank you for choosing Enigma

To ensure the installation process is simple and efficient, we recommended you read this guide in full first. Specific tools are also required to complete the installation:



Pencil



Tape Measure



Knife



Hex Keys (metric)



Hacksaw / Tin-snips



Laser Level



Cordless Screwdriver



Power Chop Saw

Getting started

Before you start installation ensure you have read and understood the instructions.

DELIVERY

The Enigma pocket door system will be delivered in multiple boxes. One is the pocket frame and the other is the trim surround.

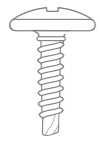
If a door leaf has been ordered this will come separately.



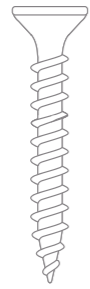
Telescopic kit contents

Familiarise yourself with components included. All fixings will come pre-packaged to suit your specific project requirements.

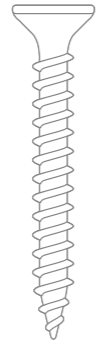
FRAME FIXINGS



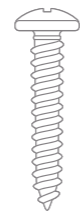
Type-1
19mm Self drilling
(Pan head)



Type-2
40mm Screw
(Countersunk)



Type-3
50mm Screw
(Countersunk)



Type-4
30mm Screw
(Domed head)



Type-5
25mm Self drilling
(Countersunk)

TELESCOPIC COMPONENTS



Adjustable Pulley



Fixed Belt Clamp



Fixed Pulley



Belt



Moving Connector

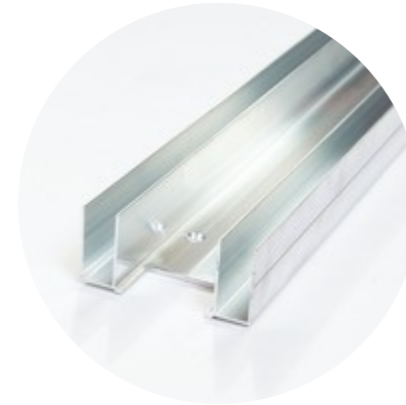


Door Guide

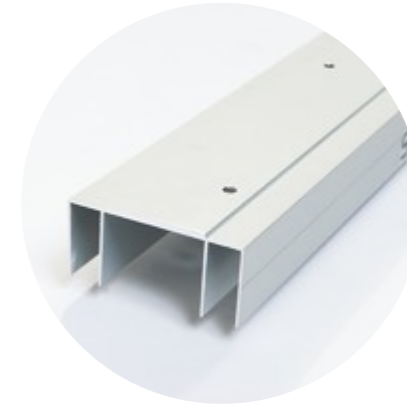


Sliding Gear Set

FRAME COMPONENTS



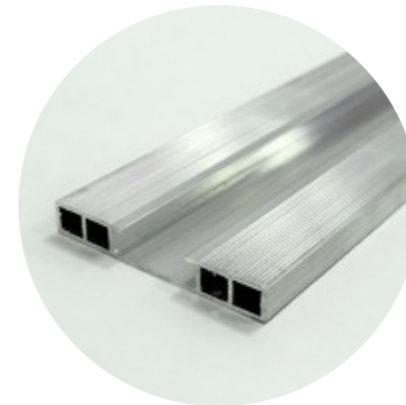
Base Channel



Head Channel



Leading Edge Jamb



Intermediate Jamb



Timber Insert



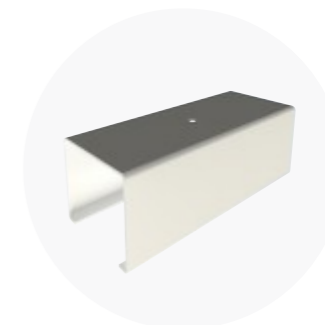
Remote Stop



Door Channel Guide



Door Guide Pin



x1 End-block



Brush Strip

Wall construction preparation

The Enigma system can be fitted to steel or timber studwork partitions. If using steel you must ensure the head stud is strong enough to take the door weight.

IMPORTANT INSTALLATION NOTES

1. Studwork size

The studwork size required is **146mm**.
If using steel studs a 146mm Head and Base Track should be used along with 144mm Uprights.

2. Steel studs

If using steel studs, timber inserts are required within the studs to provide additional strength.

3. Doors above 2300mm

If the door height you are installing is above 2300mm then using 2 layers of plasterboard is recommended.

This applies to Concealed frame NFR and Visible frame NFR. To order kits to suit two layers of plasterboard, add double boarded to the product description.

Bespoke requirements?

Enigma can be customised to suit bespoke projects. In principle, the installation process remains the same, however certain installation dimensions may differ. Please contact the Selo team to discuss your bespoke requirements.

1

STRENGTHEN HEAD



When constructing your stud partition, please ensure the head is strong enough to take the weight of the sliding door that will hang from it.

2

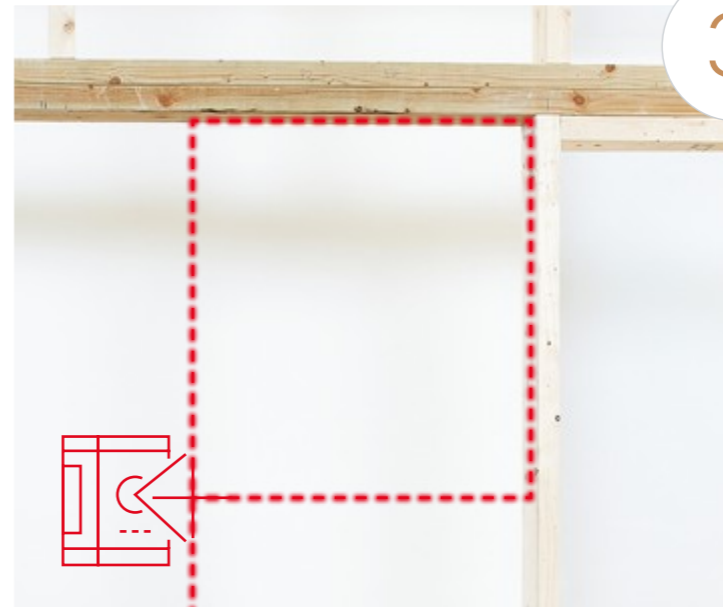
CHECK SIZE WITH SCHEDULE



When forming the structural opening, please ensure you are working to the correct opening size provided on the door schedule.

3

LEVEL-UP



Ensure the opening is square and plumb.

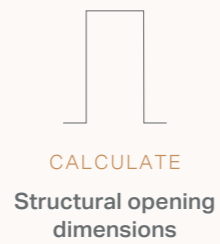
IMPORTANT

We recommend the use of a laser level for setting out.

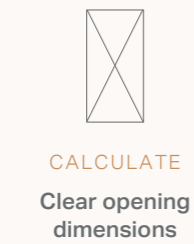
NFR C Calculations



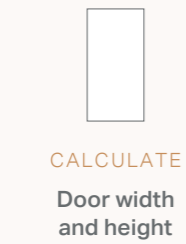
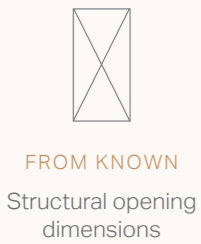
SIZE CALCULATIONS



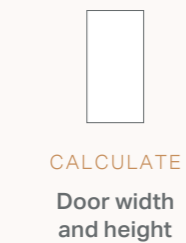
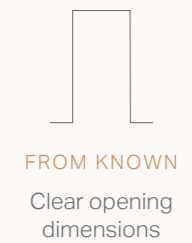
Single Door (Telescopic)
 S/O width = x3 Door leaf width +26mm
(Inc. 10mm packer)
 Structural opening height = Door leaf height +90mm



Single Door (Telescopic)
 Clear opening width = x2 Door leaf width -79mm
 Clear opening height = Door leaf height -7mm



Single Door (Telescopic)
 Door width = Structural opening width -26mm ÷ 3
 Door height = Structural opening height -90mm



Single Door (Telescopic)
 Door width = Clear opening width +79mm ÷ 2
(Excl. 10mm packer)
 Door height = Clear opening height +7mm

Base Channel Calculations

Please refer to **Step 4** of the **Telescopic Frame Installation** instructions shown on **page 12**.



Telescopic frame installation



1 PREPARE HEAD CHANNEL & SLIDING TRACK

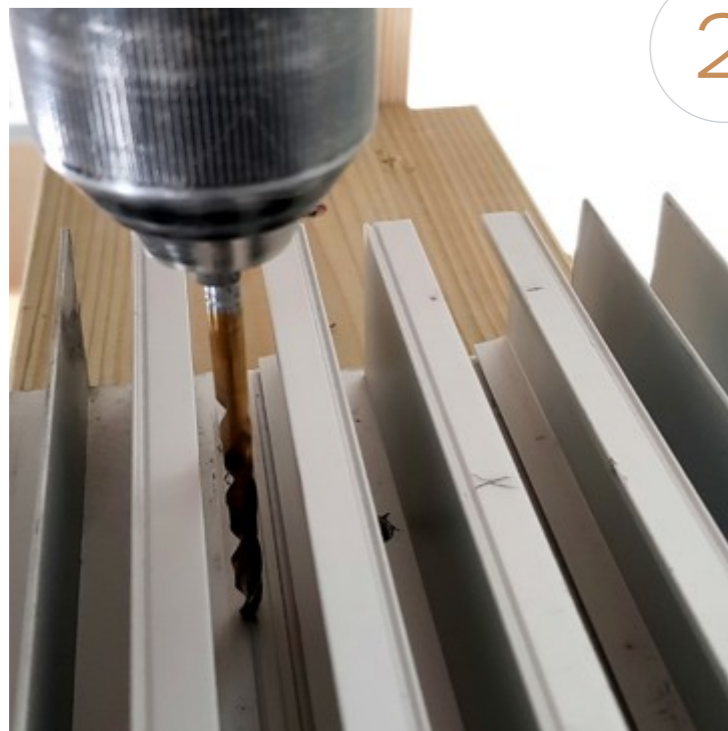
Telescopic doors

1a Measure the structural opening width and cut the **Head Channel** to that length.

IMPORTANT

On our widest kit, two head channels may be supplied.

1b Remove the **Remote stop**, then cut the **Sliding Top-tracks** to the Head Channel length, less 75mm.



2 HEAD CHANNEL PREPARATION

Telescopic doors

Line the end of the **Sliding Top-Tracks** with the end of the **Head Channel** and pilot drill the holes with a **6mm** drill bit.

IMPORTANT

Ensure the groove in the centre of the track and the Head Channel line up as shown. This will leave a 75mm gap which must be positioned at the strike end of the pocket.



3a



3b



3c

3 FIT THE HEAD CHANNEL AND TOP TRACK

3a Fix the **Head Channel** in place and fix using **Type-2** screws making sure the 75mm gap for the tracks is at the strike side of the pocket.

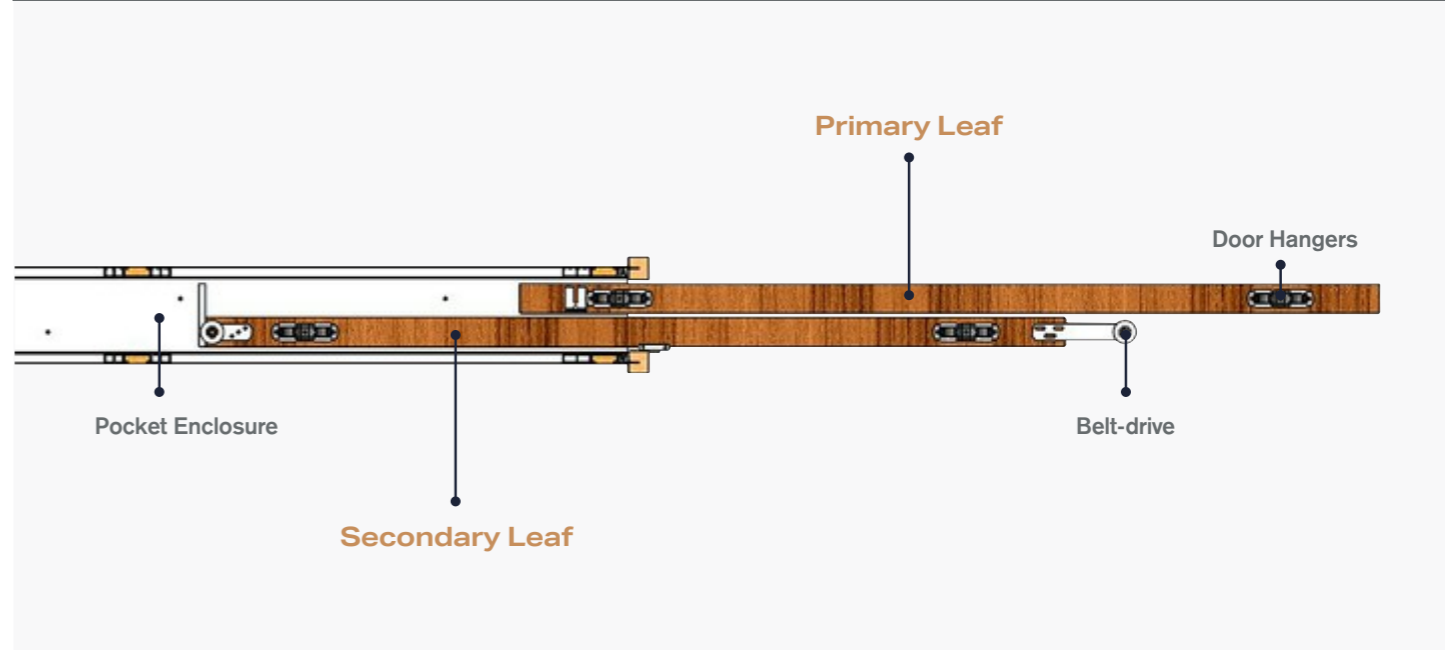
3b Slide the Remote Stop into the **Secondary Sliding Top Track**. See below diagram to identify the **Primary** and **Secondary Leaf**.

3c Line the **Sliding Top Tracks** with the pilot holes drilled in Step 2 and fixing using **Type-3** screws.

Only use the silver **Type-3** screws provided to secure the tracks into place. **Use of a larger screw will prevent the Remote Stop from sliding freely within its groove.**

It will be necessary to slide the **Remote Stop** back to access all the fixing holes in the track.

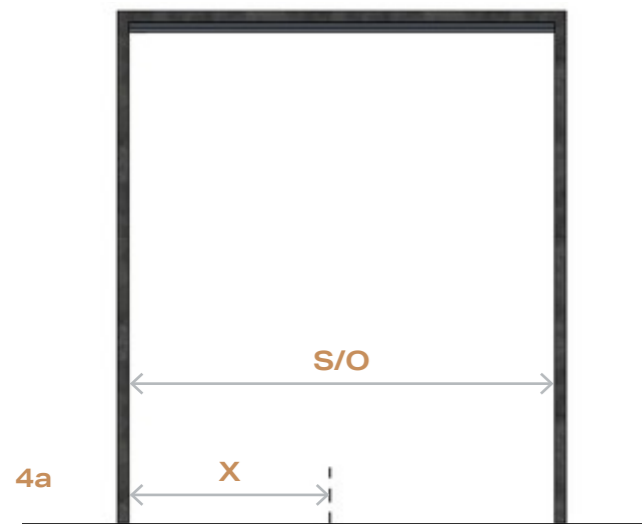
PRIMARY & SECONDARY DOOR DIAGRAM



Base Channel position calculations

NFR Concealed Trim

$X = \text{Door Width} \times 2 \text{ (minus) } - 60\text{mm}$



4a

4

CALCULATE LENGTH OF BASE CHANNEL

To accurately determine the length of the **Base Channel**, first calculate the required clear opening (**X**) using the Base Channel position calculations on the left.

Measure back from the **Strike Stud** and mark the measurement on floor.

Cutting Base Channel to size

4a Measure the **Structural Opening** and minus **X**.

4b Ensure the **Base Channel** is positioned in relation to where the **Primary Leaf** contacts the strike trim. Cut the **Base Channel** from the end inside the pocket.

IMPORTANT

If provided with a cut-to-size system, skip to Step 5.

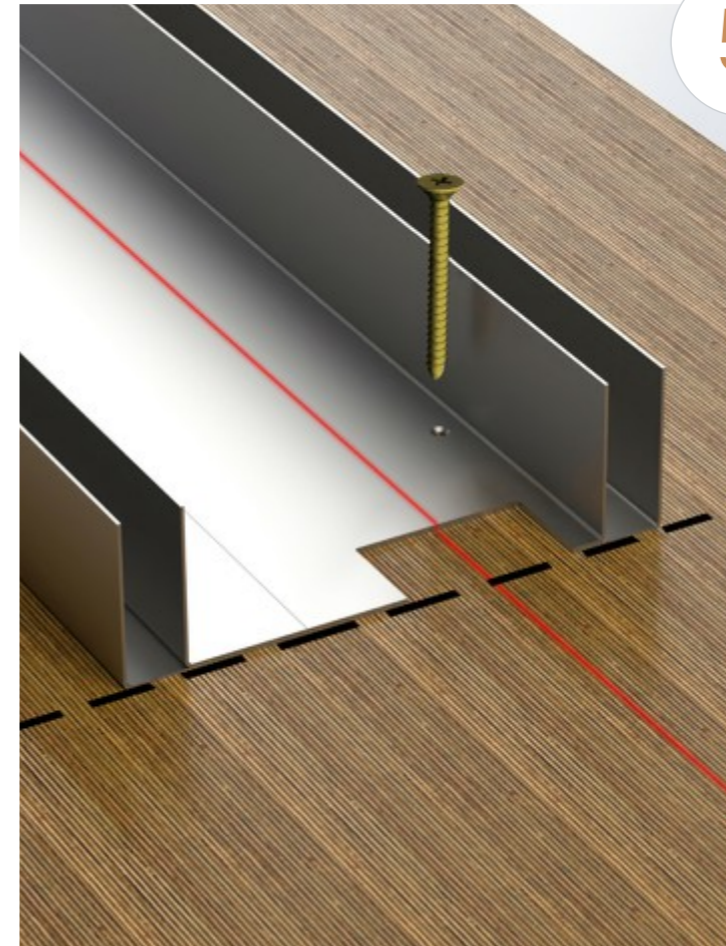
5

LINING UP & FIXING BASE CHANNEL

Place the **Base Channel** on the floor between the line marked in **Step 4** and the rear stud.

At this stage it is vital that care is taken to ensure that the centre lines of the **Base Channels** are in line and plumb with the **Head channels**. Any deviation in this alignment will result in misaligned doors and trims.

Secure to the ground with **Type-2** fixings.



6

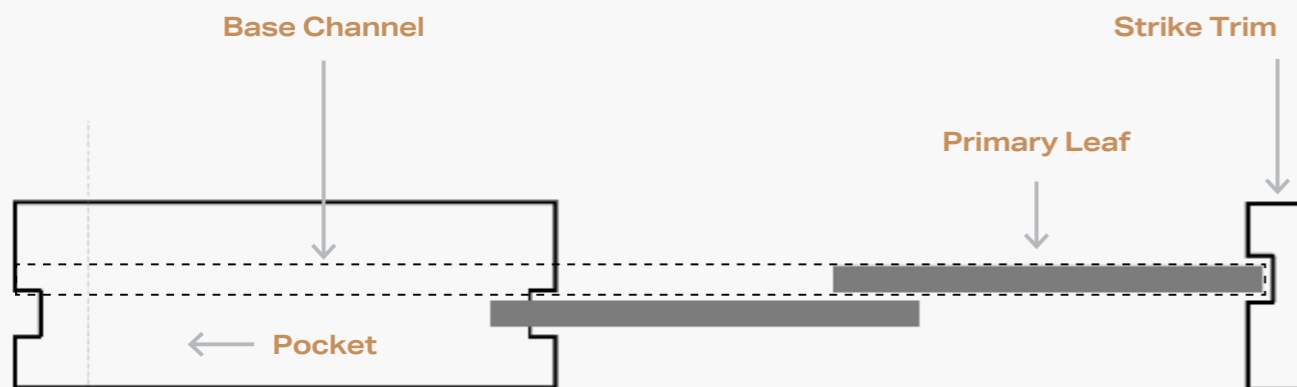
FIT DOOR GUIDE PIN

Fit the door guide pin at the finished floor level with **Type-4** fixings. The pin offset needs to be facing the strike stud and aligned centrally with the centre line on the Base Channel.

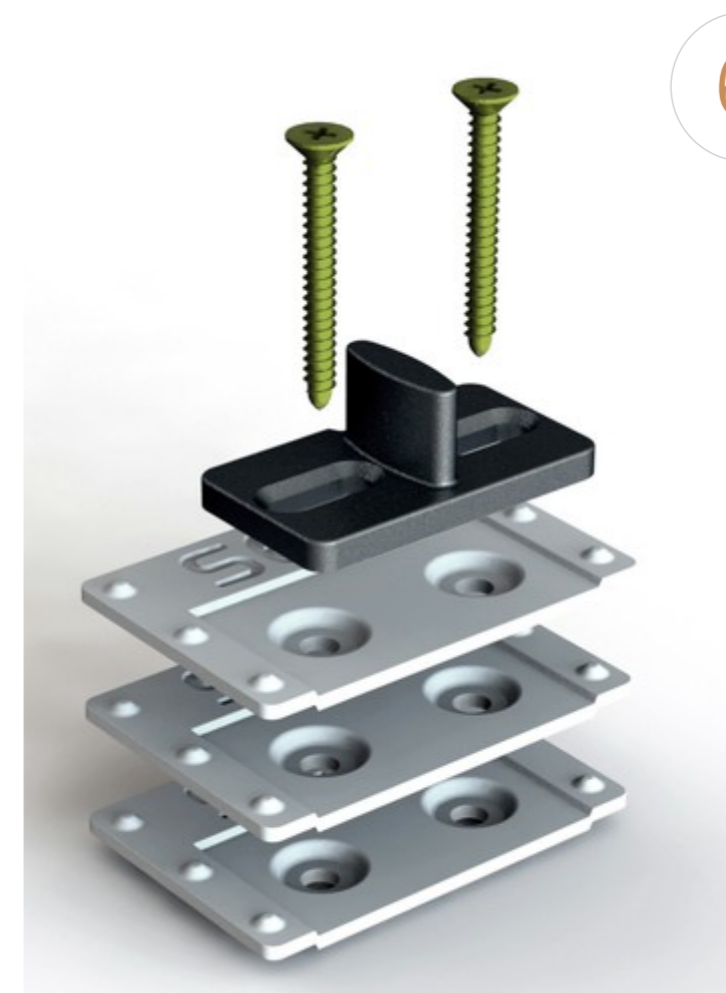
If your installation requires the door guide pin to be raised up - use the 1mm stackable packers

IMPORTANT

1. The pin needs to be fitted at FFL (finished floor level). If the finished floor is not yet installed, fitment of the floor pin can be delayed until the flooring is completed.



4b





7

CUT LEADING EDGE & INTERMEDIATE JAMB

Cut the **Leading edge jamb** and **Intermediate jamb** 15mm less than the structural opening height.



8

CUT & FIT INTERMEDIATE TIMBER INSERT

Cut the intermediate **Timber insert** 100mm shorter than the aluminium jamb and slide the insert into the **Intermediate jamb** so it sits 50mm from each end.

IMPORTANT

When using door leaves wider than 926mm the kit will be supplied with extra intermediate jambs to be fitted equally space within the pocket width.



9a

9

FIT POCKET SIDES & FIX THE JAMB

9a Install the **Intermediate Jambs** in between the rear pocket stud and the leading-edge jambs, then fix the **ONE** leading edge jamb.

9b Slide the **Leading edge jamb** into **Base Channel** with notched end at the top, so the flange sits hard against the end of the **Base Channel**.

Plumb the jamb and fix into place using one **Type-1** screw top and bottom as shown in the image. Must be posited furthest from the opening.



9b

10

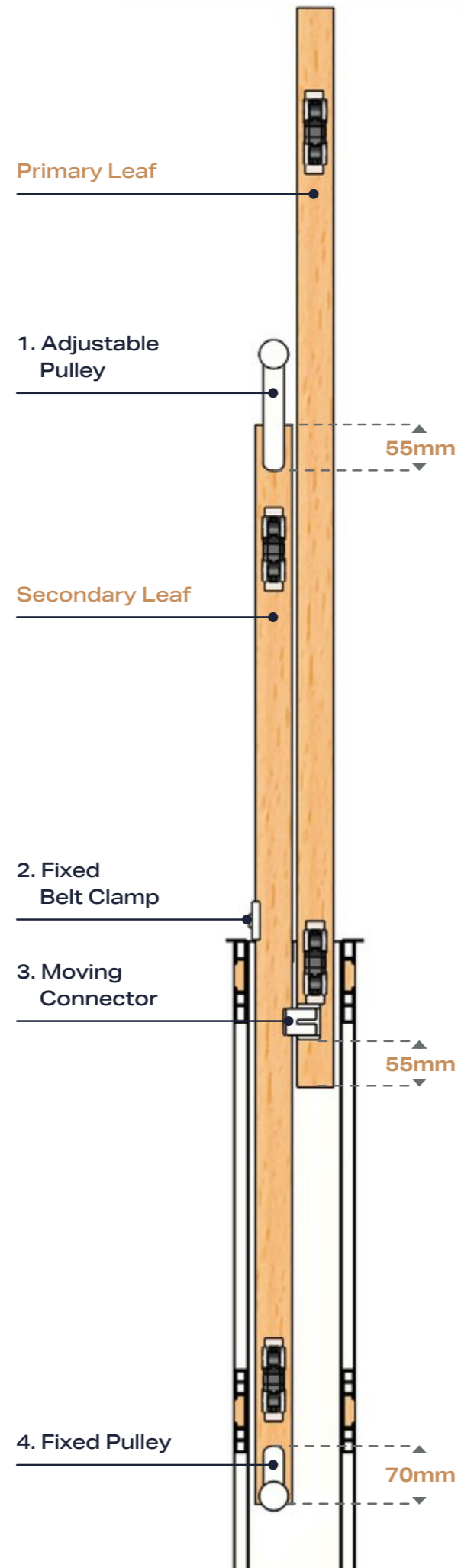
FIT BRUSH STRIP

Cut the **Brush Strip** to length and fit to the leading edge aluminium profile.



Telescopic door leaf installation

With the Enigma concealed system the door leaf can be installed after the frame has been plastered.



1

INSTALL TELESCOPIC GEAR

Install the x4 components of the **Telescopic Gear** to the tops of the doors as shown.

IMPORTANT - Do not fix to belt yet

2

FIT DOOR HANGER BRACKETS

Fit the head brackets **150mm** from the edge of the door leaf to centre of the bracket, ensuring both brackets are the same way up.

Pilot and use the **Type 3 screws** provided.



3

INSTALL MOVING CONNECTOR

Install the **Moving Connector** to the top of the **Primary Leaf** as shown ensuring access to the hex bolt.



4

FIT THE GUIDE CHANNEL

Apply a thin bead of adhesive into the groove in the bottom of the doors and then tap the plastic channels into position





5

ASSEMBLE GEAR

Wipe out the tracks with a damp cloth to remove any swarf or debris.

5a Screw the bolts into the trolley several turns and then insert the trolleys into the track. (Two wheels in each track)

5b Adjust the bolts to achieve a gap approximately **40mm** between the underside of the track and the top of the bolt.



8

FIT THE FRONT DOOR STOP

Slide the white nylon door stop into the track and fix into place by tightening the grub screw.

This can be finally adjusted once the trims are installed.



6

HANG DOORS

Hang the doors onto the roller wheel bolts ensuring the doors run smoothly.

IMPORTANT
Do not fasten the bolts at this stage as further adjustments may be necessary.



9

FIT TRACK END BLOCK

The track **End-block** fits at the end of the track for a single door and in the middle of the two tracks for a double door.

First drill a pilot hole and fix the block into place using the **Type-9** screw.

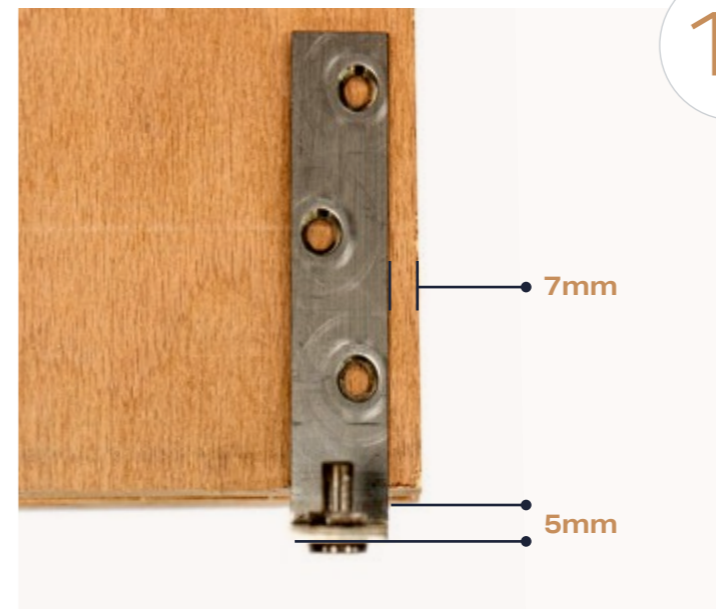


7

INSTALL FIXED BELT CLAMP

Install the **Fixed Belt Clamp** flush against the **Secondary Leaf Head Track**. (Pilot holes may be required). The back edge of the **Fixed Belt Clamp** must be inline with the aluminium **Leading Edge Jamb** (as show with the white dotted line).

NOTE
The Head Channel from this image has been removed to aid clarity.



10

INSTALL DOOR GUIDE

Install the "L" shaped **Door Guide** to the heel of the **Primary Leaf**, ensuring to leave the pin loose for adjustment later.

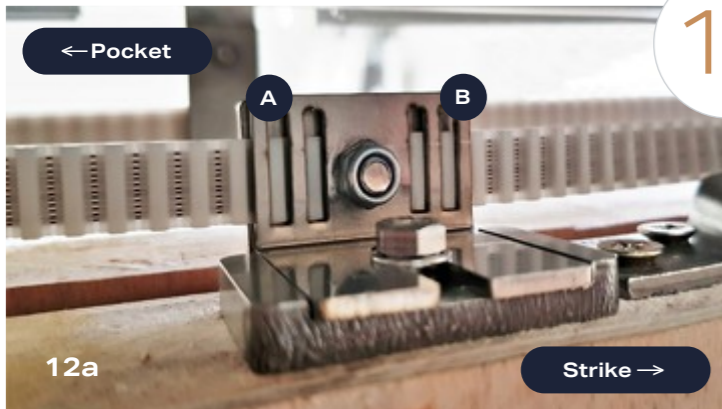


11

ADJUST GAPS

Clamp **6mm Packers** between the doors top and bottom to keep the doors from binding and to maintain correct distance. Slide the doors left and right in the pocket to get even gaps between the pocket sides and the door leaves.

Once the gaps are even, tighten the **Hanging Bracket Bolts** (Step 6) tight enough to prevent sideways movement and **remove the Packers**. Tighten the **Door Guide** as per the previous step.



12

INSTALL BELT

12a Start by fixing the **Belt** into part **A** on the **Moving Belt Connector** (Belt Connector fixed to the top of the door).

12b Thread the Belt around the **Pocket-side Roller** on the door followed by the **Strike-side Roller**, then back to the **Fixed Belt Connector** to measure the length of Belt required.

IMPORTANT

Make sure that the belt is straight. Adjust the Moving Belt Connector (12a) to straighten if required.

Cut the **Belt** to length and fix into part **B** of the **Moving Belt Connector**.

IMPORTANT

Ensure that the Belt is not loose or rubbing on the Door or any Bolts etc.

12c Slide the doors back into the pocket so they are both flush and in the fully open position, then secure the **Belt** into the **Fixed Belt Connector**.

IMPORTANT

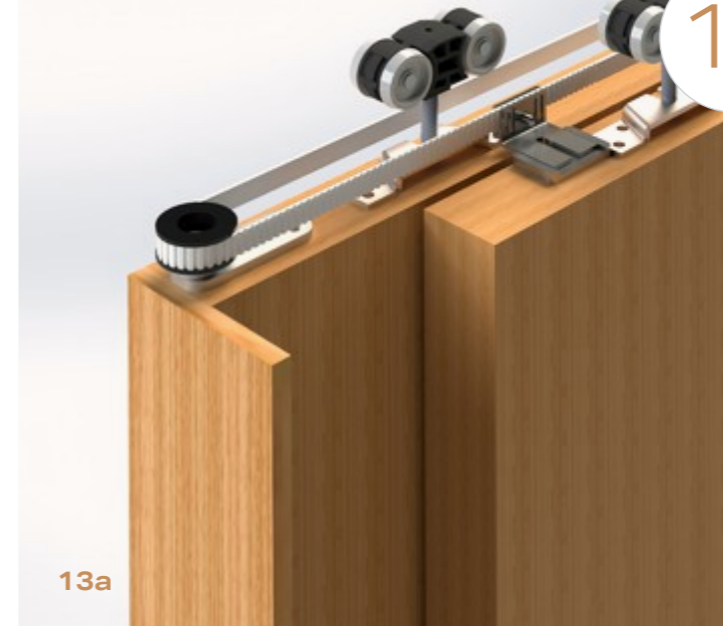
Make sure that the belt is straight. Adjust the Moving Belt Connector (12a) to straighten if required.



12b



12c



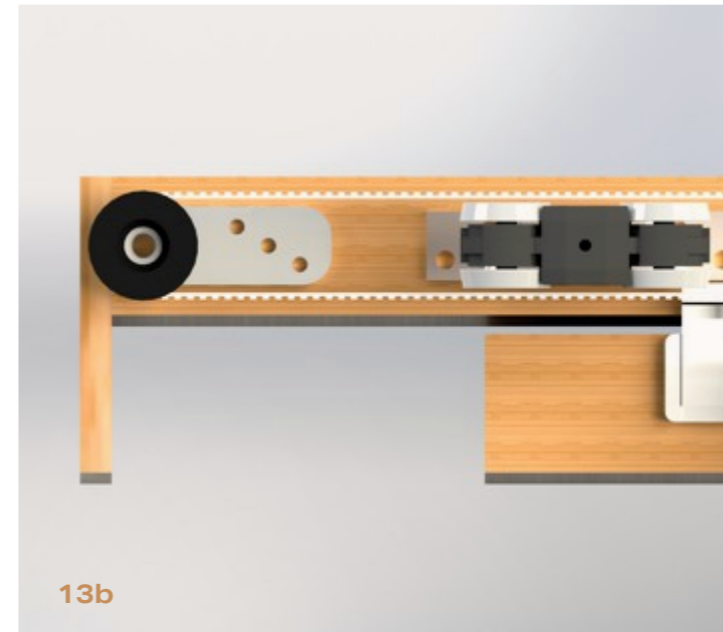
13

TIMBER LIPPING COVER

13a Using the **Type-2 Screws** included, fix the **Timber lipping** to the rear of the **Secondary leaf** to block the view into the pocket when the door is open.

13b The timber should be flush with the front and bottom face of the door, and overlap the primary door to ensure it doesn't catch inside the pocket.

13a



13b



14

PLASTERBOARD THE WALL

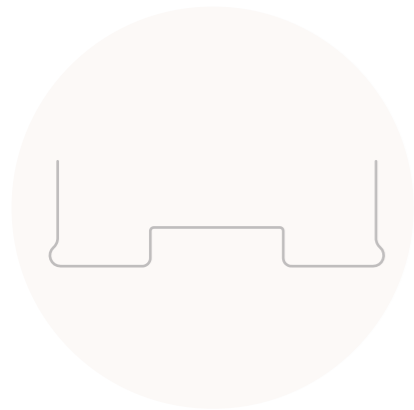
Plasterboard over the pocket along with the rest of the wall using the **Type-5** self drilling screws provided. It is vital to ensure the leading edge jambs remain completely vertical and plumb once boarded.

It is essential to clear out all swarf or debris that may be in the top track and bottom channel at this stage.

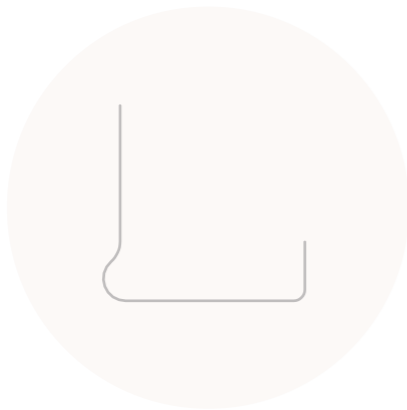
Concealed trim installation

Now the pocket door jamb is installed you are ready to install the concealed trim.

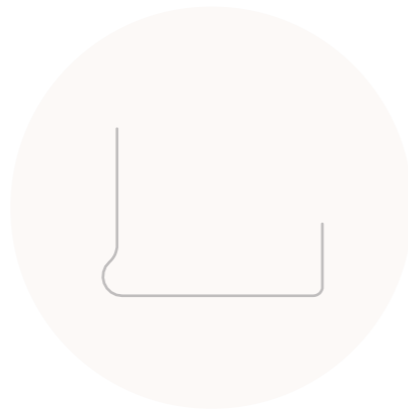
TRIM COMPONENTS



Concealed Strike Trim x1



Concealed Leading Edge Trim x2



Concealed Head Trim



Timber Head Trim



Fixings Bag



Strike Jamb Seals



1

INSTALL THE STRIKE TRIM

Cut the trim to the height of the opening and fit over wall end and fix through the perforated flanges using the **Type-5** screw.

IMPORTANT

The notched end of the trim goes at the top and fits inside the Head Channel.



2

INSTALL LEADING EDGE TRIM

Cut the trim to the height of the opening and fit over the pocket sides and fix through the perforated flanges using **Type-5** screw.

IMPORTANT

1. Fixings need to be every 200mm.
2. Ensure the opening is plumb and square before plastering.

3

INSTALL THE HEAD TRIM

Slide the door fully into the pocket to fit **Head Trims**.

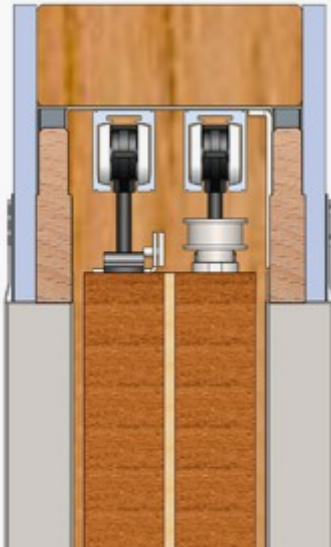
3.1 Cut the trim to the width of the opening, fit the timber first securing with **Type-5** screws.

3.2 Cut and fit the metal trim so it wraps around the Timber and the Plasterboard.

IMPORTANT

Ensure the rebates in the profiles line up.

3.1



3.2

4

PLASTERING PREPARATION

Apply plaster fibre tape to top corners.

IMPORTANT

Before plastering in the trims, using a laser level ensure that they are straight and true.



5

TAPE & JOINT / PAINT

Now the wall can be tape and jointed and wall and trims painted.

IMPORTANT

We recommend tape and jointing not plastering.



3a

DOUBLE DOORS?

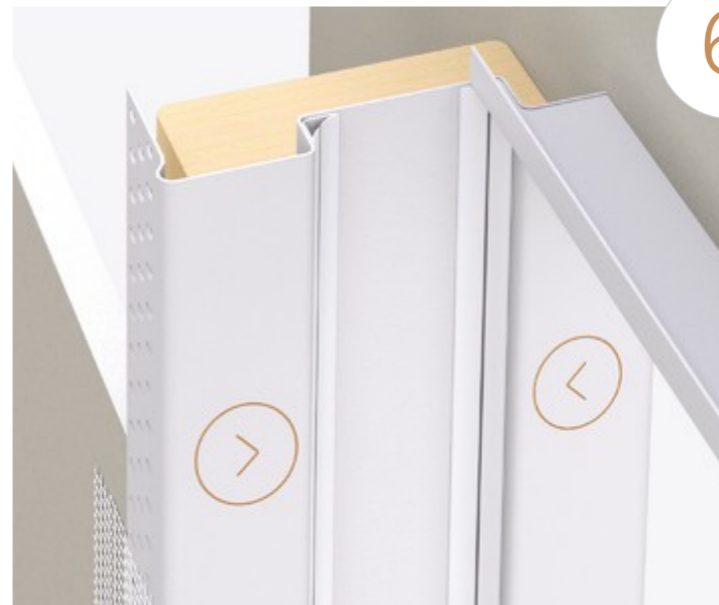
When installing double doors the strike jamb will not be used.



6

STRIKE JAMB SEALS

If the kit used is a single door leaf then the rubber corner seals need to be applied to the corners of the rebate in the strike jamb.





Congratulations!
You've now completed
the installation of your
Enigma doorset.

Innovation | Configuration | Strength

The Complete Pocket Door System



Visit our website for the very latest design styles.

www.enigmapocketdoors.com



ENIGMA
SLIDING POCKET DOORS

Technical support helpline 020 3880 0339

Email sales@enigmapocketdoors.com

K2 Kents Hill Business Park Timbold Drive Milton Keynes MK7 6TT

INNOVATION BY SELO.