



**Maximize
Value with
Pocket Doors**

ENIGMA[®]
POCKET DOORS





Contents

Enigma Pocket Doors

The Pocket Door Movement™

INNOVATION BY SELO.

Why Enigma?

Brand Promise 04

Core Values 06

Pocket Door Training 07

Why Pocket Doors? 08

Better by Design 10

Halo Assist Support 30

Pocket Door Kits

Standard Non Fire-Rated 14

Acoustic Rated 16

Power-assisted 18

Glazed Metal Leaf 20

Glass Leaf 22

Technical Details

Kit Components 11

Frame/Trim Options 26

Soft Close & Open 27

Optional Enhancements 28

Why Enigma?

Brand Promise

Since we founded in **2008**, we've consistently explored opportunities to **simplify bespoke** and **complex building** methods

Replacing them with dependable systems that deliver consistent, premium outcomes. We focused on specialist doors and that's still the core of our business now.

There are three key promises we keep to add value to our customers:



Scan QR to view more
enimapocketdoors.com/why-enigma

PROTECT

Reduce every potential risk to a minimum

Unrivalled experience of large, complex projects and pioneering fire safety assurance.

We never walk away from a problem

INNOVATE

We have a **legacy of**
industry-leading **innovation**



Our continuous development drive has led us to
the forefront of industry innovation.

*Our innovations become
the industry norms*

SUPPORT

Give **detailed project**
assistance at every stage



Proven process and industry expertise to
ensure everything works out as intended.

*Support surrounding
your project*

Why Enigma?

Core Values

We own a set of **principles that we live by.** These ten core values run through the heart of our organization

Whether it be the products and services we provide, the way we treat our staff or the way we run the business. We apply these values to everything that we do:



Scan QR to view more
enimapocketdoors.com/who-we-are

- #1 **Keep it simple**
- #2 **Tell things as they are, with respect**
- #3 **Embrace change**
- #4 **Positive 'will do' attitude**
- #5 **Work at pace, have fun**
- #6 **Never ever give up**
- #7 **Take ownership**
- #8 **One company, one team**
- #9 **Get the result**
- #10 **Learn continuously**

Pocket Door Training

Complimentary Support



CPD & Breakfast Morning Presentations:



PRESENTATION

Unveiling Design Brilliance

Aimed at Interior Designers, this presentation helps you to understand the potential design options of Enigma Pocket Doors through product samples.



CPD

Understanding Pocket Doors

Discover the range of unique design options and system enhancements that can be achieved using pocket doors. Product samples are used to demonstrate how the system works.



PRESENTATION

The Pocket Door Movement

Maximize space and value by making the switch from dated swing-doors to modern pocket doors; increase usable floor space, enhancing accessibility, and usability.

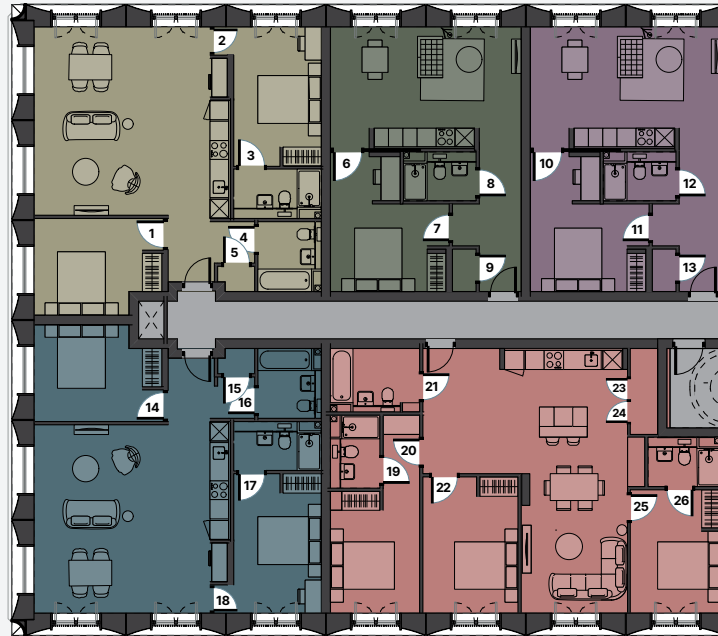


Scan QR to book
support@enigmapocketdoors.com

Why Pocket Doors?

System Benefits

Maximize Value with Pocket Doors



Apartments with
x26 Swing Doors

x26 Pocket Doors
= 420 ft²
MORE SPACE!

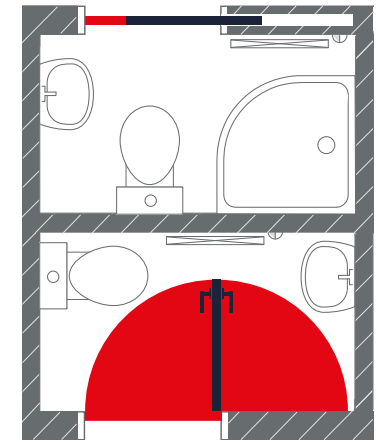


*Saves the space
of a Bedroom
& En-suite!*

Optimize Space

Maximize the value of your development with pocket doors:

- ✓ Maximize your Floor Space
- ✓ Maximize the number of Apartments in your Development
- ✓ Make your Interior Design stand out from the crowd!



Swing Door vs. Pocket Door



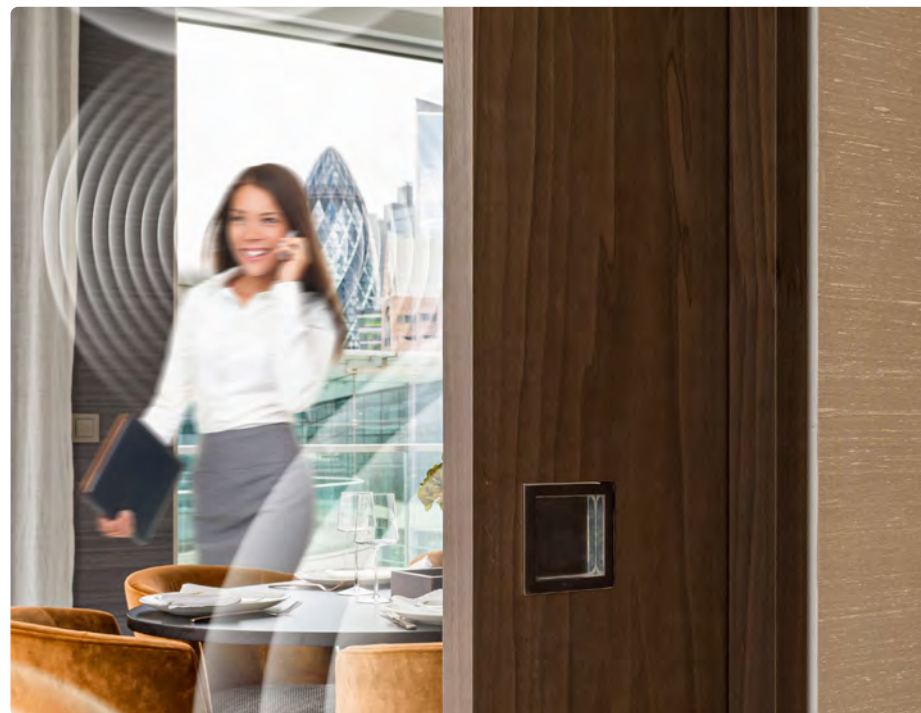
Scan QR to view more
enigmapocketdoors.com/maximise-value



Enhance **Design**

Visible trim or concealed frame options are available in a range of flexible sizes. The simple, modular design allows for rapid installation. Adapt your design with optional features, such as:

- ✓ **Full-height**
- ✓ **Perpendicular Wall**
- ✓ **Bespoke Joinery Integration**
- ✓ **Offset Wall Thickness**



Increase **Strength**

Enhance your interiors with high performance pocket doors which increase versatility by offering acoustic reduction, power assistance or even as room dividers to extend space for entertaining.

- ✓ **Room Dividers**
- ✓ **Enhanced Disabled Access**
- ✓ **Power-assisted Opening**
- ✓ **Acoustic Option**

Why Enigma Pocket Doors?

System Benefits

Better by *Design*

System Design

The pocket door must operate smoothly and consistently without hampering the user experience.

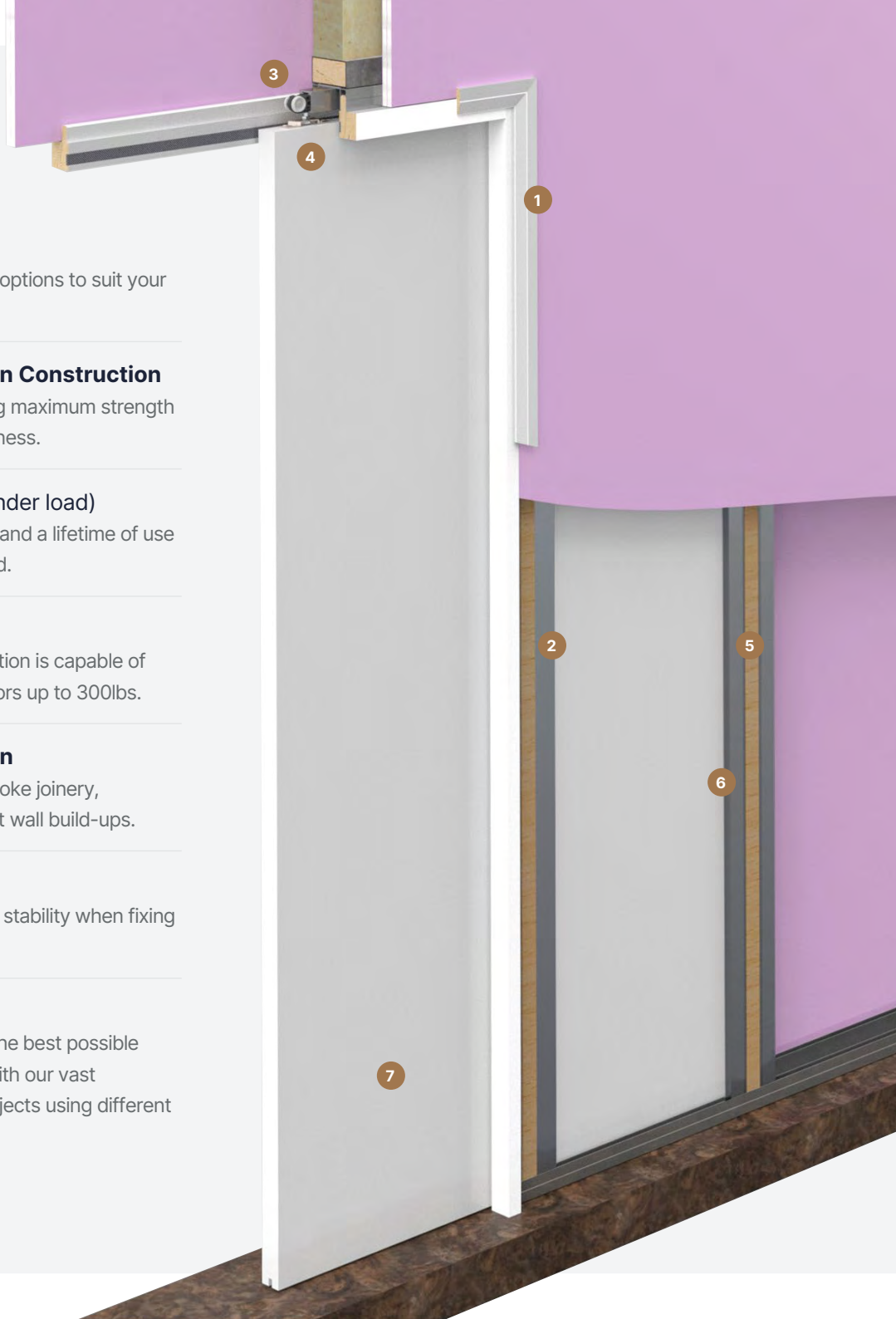
Quality hardware is paramount for a fluid, soft close, as opposed to a wobbly, squeaky rattle! The system must also be designed so that it is easy to install consistently, limiting performance issues which may arise from poor installation.

See p12 for Pocket Door Kits



Scan QR to view more
enigmapocketdoors.com/by-design

- 1 Trim Options**
Concealed, or Visible Trim options to suit your interior design.
- 2 Aluminum Box-section Construction**
Durable construction giving maximum strength for the minimum wall thickness.
- 3 100k Cycle-tested (under load)**
Rigorously tested to withstand a lifetime of use for complete peace of mind.
- 4 Up to 300lbs Load**
The super strong construction is capable of supporting solid timber doors up to 300lbs.
- 5 Stud-like Construction**
Adaptable to support bespoke joinery, perpendicular walls, off-set wall build-ups.
- 6 Ribbed Side Studs**
Provide additional grip and stability when fixing the drywall.
- 7 Design Support**
We can help you achieve the best possible design and specification with our vast experience of different projects using different interfaces and materials.



Why Enigma Pocket Doors?

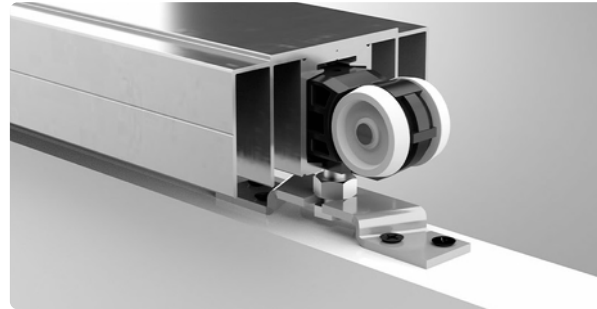
Kit Components

FSC Responsibly
Sourced Timber



Base Channel

The leading edge and intermediate jambs slot into the base channel of the Enigma pocket door system and are fixed into place. The door guide pin is used to keep the door in-line.



Gear Sets

The standard sliding gear set is surface-mounted to the top of the sliding door and runs within the Head Channel. The gear sets are tested to 100,000 usage cycles.



Head Channel Junction

The leading edge and intermediate jambs are slotted into the head channel and fixed into place once plumb.



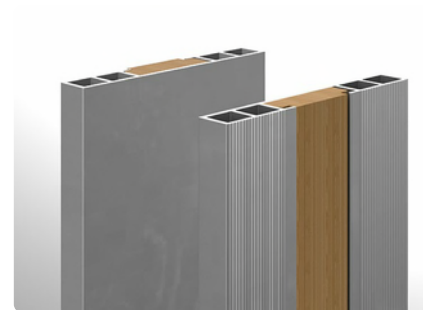
Strike Jamb

The strike jamb features rubber batwing seals so when the door is closed the leaf sits within the sealed recess. The door frame is either concealed by jointing up to, or visible trims are added.



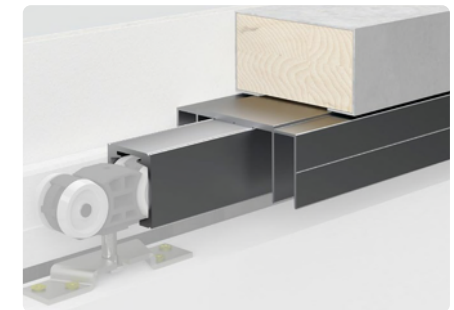
Leading Edge Jamb

The leading edge jamb of the Enigma pocket door system is the leading support of the pocket which has a side flange for the plasterboard to butt up against.



Intermediate Jamb

The intermediate jamb forms the rest of the pocket. The aluminum profile has a timber insert which provides extra strength and facilitates easy fixing.



Head Channel

The head channel for the Enigma pocket doors is the same width as the stud, making it simple to accurately place and fix to the head stud.

Pocket Door Kits

Range Overview

The most *comprehensive* pocket door range

Standard Non Fire Rated

The original pocket door system

14

Glazed Metal Leaf *Fenestra*®

Metal-framed pocket door leafs

20

Acoustic Rated

Up to 30dB acoustic attenuation with added smoke rating

16

Glass Leaf

Allow light to travel through rooms

22

Power-assisted *Motus*®

Slide open and closed with powered pocket doors

18



Design **Versatility**

Never compromise functionality or beautiful design, when it comes to using pocket doors.

We offer a comprehensive range of options including acoustic and smoke-rated pocket doors, as well as concealed or visible trim designs to empower, rather than constrain designers' creativity. Additionally, the inclusion of a self-supporting head can be utilized when the pocket door kit cannot be directly attached to the ceiling or floor slab.

See p14 for Pocket Door Kits



Enhanced **Accessibility**

A contactless electromagnetic propulsion system silently opens and closes doors with minimal to no user handling required.

By eliminating the need for physical contact, it offers a hygienic and convenient solution, particularly in environments where cleanliness and ease of access are paramount such as healthcare facilities, commercial buildings, or residential settings. The advanced propulsion system ensures smooth and efficient door operation while enhancing overall user experience.

See p18 for Power-assisted Pocket Doors



Rapid **Installation**

Installation is incredibly simple and fast with user-friendly instructions and straightforward assembly.

Even those with limited experience can easily complete the installation process in no time. We are also the only supplier to offer a pre-assembled kit for large quantity orders, minimizing errors and simplifying scheduling for tradespeople. Increasingly popular for their space-saving benefits and factory-built quality assurance.

See p28 for Pocket Door Enhancements

Pocket Door Kits

Standard Non Fire Rated

The original pocket door kit has been refined for modern construction methods to maximize space and elevate design aesthetics where fire rating isn't necessary.

Premium components and cutting-edge innovation, promising an unparalleled experience. Commonly found in apartment buildings, they grace corridors leading to bathrooms and bedrooms, elevating spaces with their exceptional quality and design.

Configurations

Designed to suit a range of opening sizes, simply cut-to-size to suit your exact opening.



Scan QR to view more
enigmapocketdoors.com/non-fire-rated

Leaf Width	Leaf Height	Leaf(s)	Concealed Frame Kit	Visible Trim Kit
24 Inches to 36 Inches	Up to 83 Inches	Single	SEL-PRT-10152	1 SEL-PRT-10100
		Double	SEL-PRT-10170	1 SEL-PRT-10124
	Up to 112 Inches	Single	SEL-PRT-10155	1 SEL-PRT-10103
		Double	SEL-PRT-10173	1 SEL-PRT-10127
36 Inches to 48 Inches	Up to 83 Inches	Single	SEL-PRT-10153	1 SEL-PRT-10101
		Double	SEL-PRT-10171	1 SEL-PRT-10125
	Up to 112 Inches	Single	SEL-PRT-10155	1 SEL-PRT-10104
		Double	SEL-PRT-10174	1 SEL-PRT-10128
48 Inches to 65 Inches	Up to 83 Inches	Single	SEL-PRT-10154	1 SEL-PRT-10102
		Double	SEL-PRT-10172	1 SEL-PRT-10126
	Up to 112 Inches	Single	SEL-PRT-10157	1 SEL-PRT-10105
		Double	SEL-PRT-10175	1 SEL-PRT-10129

No. of Plasterboard Layers Required

No. of Plasterboard Layers Required

Construction

Build-up is based on a 3.7" stud, using 1 or 2 layers of 1/2" plasterboard (see table), either side of the wall.

- 1 Concealed Frame
- 2 Visible Trim
- 3 Strike Jamb
- 4 Head Channel
- 5 Gear Set
- 6 Door Leaf (options available)



Performance

Sustainably sourced timber parts.
System tested to over 100k cycles.
Supports doors up to 300lbs.



100k Cycle Load
Tested



Supports Doors
up to 300lbs

Door Leaf Configurations

Available as a single (opening from left or right) or double-leaf configurations to suit your specific requirements.



Single
Leaf

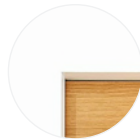


Double
Leaf

Frame/Trim Options

Choose a trim to suit your individual interior design style.

See p26



Concealed
Frame



Visible
Trim

Optional Enhancements

Customize your chosen pocket door system with a range of additional system options and enhancements to ease installation, optimize functionality and enhance the user experience.

*For large quantity orders

See p28



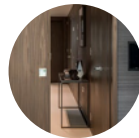
Pre-assembled*
Rapid Install



Full Height
(Flush)



Self-supporting
Head



Perpendicular
Wall



Touch
Latch



Soft Close/Open
Dampener



Simultaneous Open
Double-leaf only



Pocket Door Kits

Acoustic Rated

Reduce the transmission of sound, quickly and simply with an acoustic rated sliding pocket door.

Within contemporary open-plan spaces, it's essential to have the ability to isolate sound when needed. Acoustic pocket doors are the perfect solution, allowing for the maximum amount of clear floor space whilst open, with the required reduction in sound when closed.



Configurations

Designed to suit a range of opening sizes, simply cut-to-size to suit your exact opening.



Scan QR to view more
enigmapocketdoors.com/acoustic-rated

Leaf Width	Leaf Height	28dB Visible Trim Kit			30dB Concealed Kit			30dB Visible Trim Kit				
28 Inches to 31 Inches	Up to 83 Inches	SEL-PRT-10236	28dB Acoustic Attenuation	No. of Plasterboard Layers Required	1	30dB Acoustic Attenuation	No. of Plasterboard Layers Required	2	SEL-PRT-10250	No. of Plasterboard Layers Required	2	
	Up to 112 Inches	SEL-PRT-10243			1			SEL-PRT-10271	2		SEL-PRT-10257	2
32 Inches to 36 Inches	Up to 83 Inches	SEL-PRT-10237			1			SEL-PRT-10265	2		SEL-PRT-10251	2
	Up to 112 Inches	SEL-PRT-10244			1			SEL-PRT-10272	2		SEL-PRT-10258	2
37 Inches to 41 Inches	Up to 83 Inches	SEL-PRT-10238			1			SEL-PRT-10266	2		SEL-PRT-10252	2
	Up to 112 Inches	SEL-PRT-10245			1			SEL-PRT-10273	2		SEL-PRT-10259	2
42 Inches to 46 Inches	Up to 83 Inches	SEL-PRT-10239			1			SEL-PRT-10267	2		SEL-PRT-10253	2
	Up to 112 Inches	SEL-PRT-10246			1			SEL-PRT-10274	2		SEL-PRT-10260	2
47 Inches to 51 Inches	Up to 83 Inches	SEL-PRT-10240			1			SEL-PRT-10268	2		SEL-PRT-10254	2
	Up to 112 Inches	SEL-PRT-10247			1			SEL-PRT-10275	2		SEL-PRT-10261	2
52 Inches to 56 Inches	Up to 83 Inches	SEL-PRT-10241	1	SEL-PRT-10269	2	SEL-PRT-10255	2					
	Up to 112 Inches	SEL-PRT-10248	1	SEL-PRT-10276	2	SEL-PRT-10262	2					
57 Inches to 59 Inches	Up to 83 Inches	SEL-PRT-10242	1	SEL-PRT-10270	2	SEL-PRT-10256	2					
	Up to 112 Inches	SEL-PRT-10249	1	SEL-PRT-10277	2	SEL-PRT-10263	2					

Performance

Sustainably sourced timber parts.
System tested to over 100k cycles.
Supports doors up to 300lbs.



100k Cycle Load
Tested



Supports Doors
up to 300lbs



28dB - 30dB
Acoustic

Door Leaf Configurations

Available as a single door leaf only
(opening from left or right).

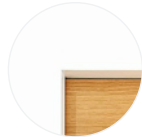


Single
Leaf

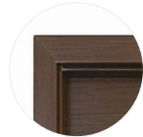
Frame/Trim Options

Choose a trim to suit your individual
interior design style.

See p26



Concealed
Frame



Visible
Trim

Optional Enhancements

Customize your chosen pocket door
system with a range of additional
system options and enhancements to
ease installation, optimize functionality
and enhance the user experience.

*For large quantity orders

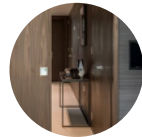
See p28



Pre-assembled*
Rapid Install



Self-supporting
Head



Perpendicular
Wall



Touch
Latch



Pocket Door Kits

Power Assisted *Motus*[®]

Power-assisted pocket doors utilize a contactless electro magnetic propulsion system to silently open and close the door with no or minimal user handling.

The standard method to control the powered doors is by using 'nudge and go'; simply nudge the door open or closed and Motus will assist with the rest. An optional 'Touchless sensor' can be fitted to the wall, simply move your hand in front of the sensor to activate the door.



Configurations

Designed to suit a range of opening sizes, simply cut-to-size to suit your exact opening.



Scan QR to view more
enigmapocketdoors.com/power-assisted

Leaf Width	Leaf Height	Leaf(s)	NFR Concealed Kit		NFR Visible Trim Kit		
34 Inches	Up to 83 Inches	Single	SEL-PRT-10044	No. of Plasterboard Layers Required	1	SEL-PRT-10000	1
		Double	SEL-PRT-10062		1	SEL-PRT-10024	1
	Up to 112 Inches	Single	SEL-PRT-10047		1	SEL-PRT-10003	1
		Double	SEL-PRT-10065		1	SEL-PRT-10027	1
39 Inches	Up to 83 Inches	Single	SEL-PRT-10045		1	SEL-PRT-10001	1
		Double	SEL-PRT-10063		1	SEL-PRT-10025	1
	Up to 112 Inches	Single	SEL-PRT-10048		1	SEL-PRT-10004	1
		Double	SEL-PRT-10066		1	SEL-PRT-10028	1
44 Inches	Up to 83 Inches	Single	SEL-PRT-10046	1	SEL-PRT-10002	1	
		Double	SEL-PRT-10064	1	SEL-PRT-10026	1	
	Up to 112 Inches	Single	SEL-PRT-10049	1	SEL-PRT-10005	1	
		Double	SEL-PRT-10067	1	SEL-PRT-10029	1	

Performance

Sustainably sourced timber parts.
System tested to over 100k cycles.
Supports doors up to 175lbs.



100k Cycle Load
Tested



Supports Doors
up to 175lbs

Door Leaf Configurations

Available as a single (opening from left or right) or double-leaf configurations with simulations opening as standard.



Single
Leaf

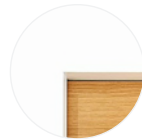


Double
Leaf

Frame/Trim Options

Choose a trim to suit your individual interior design style.

See p26



Concealed
Frame



Visible
Trim

Optional Enhancements

Customize your chosen pocket door system with a range of additional system options and enhancements to ease installation, optimize functionality and enhance the user experience.

*For large quantity orders

See p28



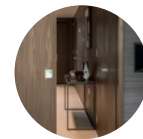
Pre-assembled*
Rapid Install



Full Height†
(Flush)



Self-supporting
Head

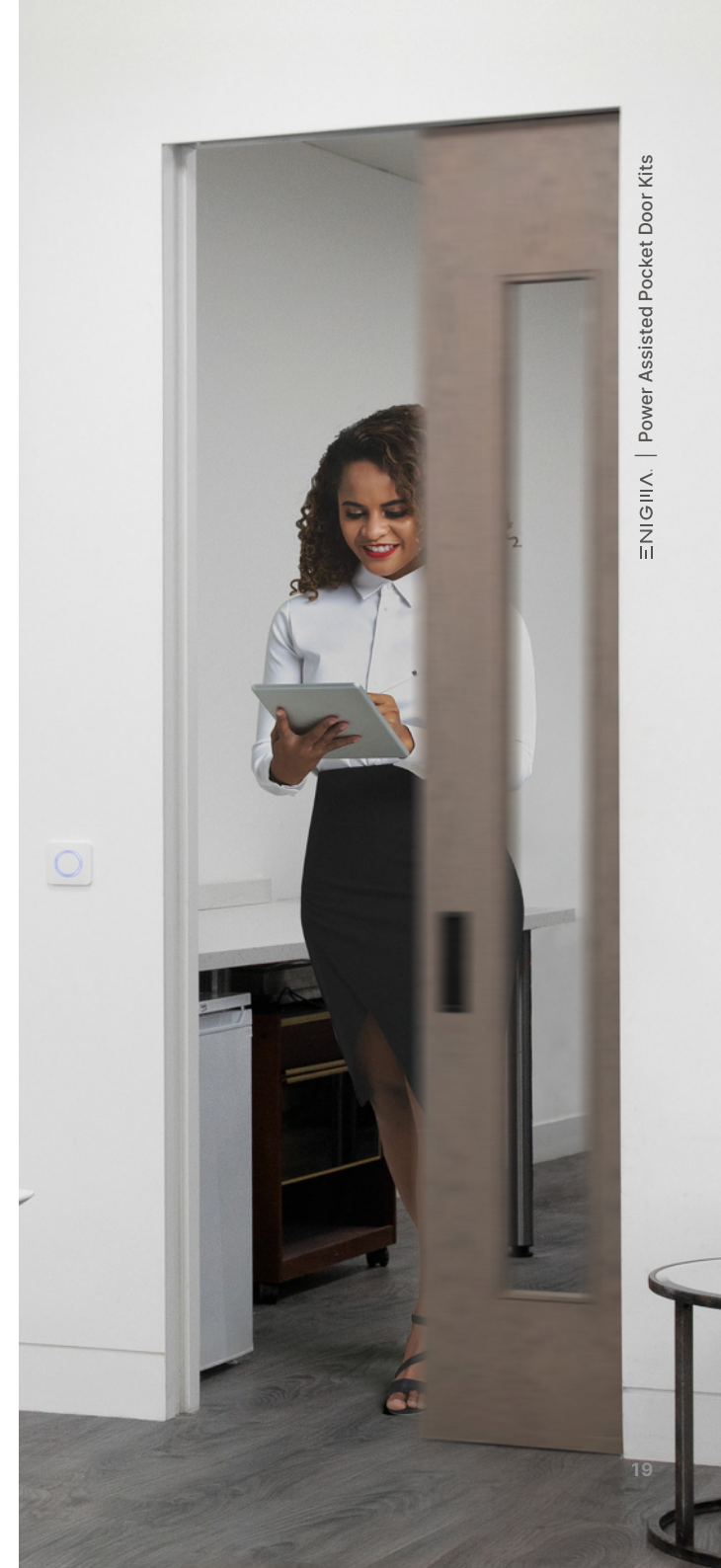


Perpendicular
Wall



Touchless
Sensor

†Image shown for illustration purposes only. Actual configuration varies.



Pocket Door Kits

Glazed Metal Leaf *Fenestra*[®]

A touch of glass! Aluminum framed glazed pocket doors are an elegant, effective way of making an interior design statement.

A luxury upgrade for high end residential applications, beautifully engineered for architects, designers and end users. Each door leaf is custom made to your specification.



Configurations

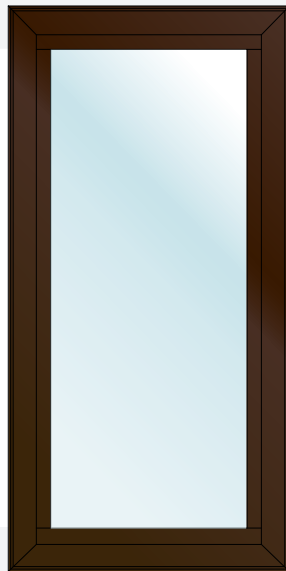
Fenestra is built to your individual project requirements in a range of different design styles.



Scan QR to view more
enigmapocketdoors.com/glazed-metal-leaf

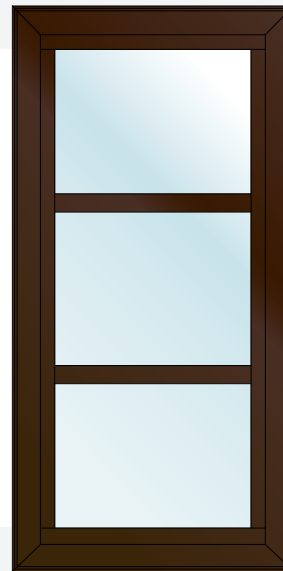
Fenestra[®] Framed Glass

0.3" thick glass enclosed within a aluminum frame for the ultimate 'Picture-frame' feature pocket door.



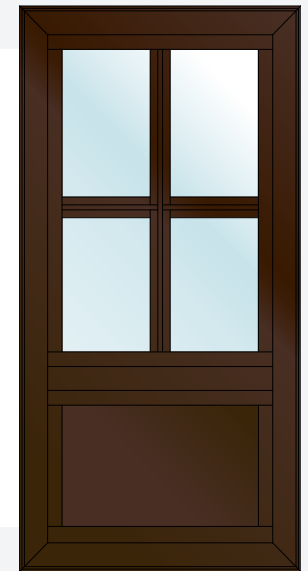
Fenestra[®] Ladder Design

Horizontal bars integrated within the door frame break-up the glazing to create a subtle Art-Deco design style.



Fenestra[®] Glazing & Infill

Completely customizable the door can combine glazing, horizontal and vertical bars as well as infill panels.



Performance

Sustainably sourced timber parts.
System tested to over 100k cycles.
Supports doors up to 300lbs.



100k Cycle Load
Tested



Supports Doors
up to 300lbs

Door Leaf Configurations

Available as a single (opening from left or right) or double-leaf configurations to suit your specific requirements.



Single or
Double Leaf

Frame Types

Configurations shown
can be customized to
suit your project.



Framed
Glass



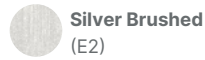
Ladder
Design



Glazing
& Infill

Door Leaf Frame Finishes

Powdercoated or anodized to your specification. If the finish you require isn't listed please talk to our design team to discuss bespoke options.



Silver Brushed
(E2)



Dk Silver Brushed
(2E2)



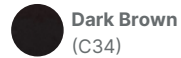
Metallic Gold
(C23)



Metallic Silver
(C31)



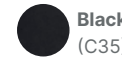
Bronze
(C33)



Dark Brown
(C34)



Metallic Grey
(C32)



Black
(C35)

Infill Options

A range of infill options including several glass configurations enabling you to retain light and privacy.



Clear
Glass



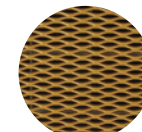
Opaque
Glass



Reeded
Glass



Mirrored
Glass

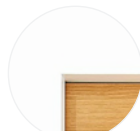


Mesh
Panel

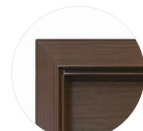
Frame/Trim Options

Choose a trim to suit your individual interior design style.

See p26



Concealed
Frame

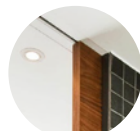


Visible
Trim

Optional Enhancements

System options and enhancements to optimize functionality and enhance the user experience.

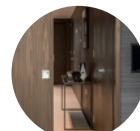
See p28



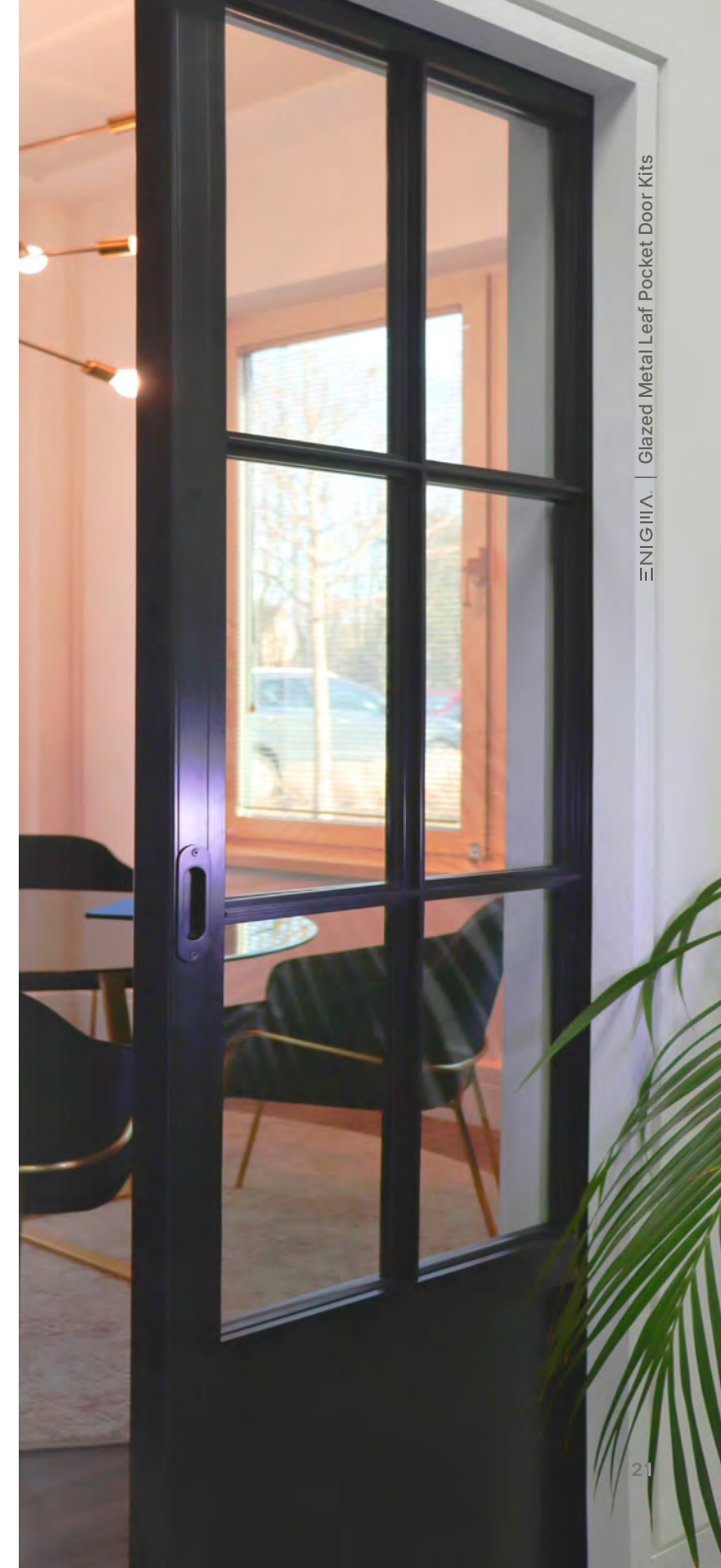
Full Height
(Flush)



Self-supporting
Head



Perpendicular
Wall

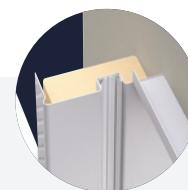


Pocket Door Kits

Glass Leaf

For the ultimate frameless finish, the Enigma system can be provided with a glass leaf enabling you to retain light and control privacy.

When using a glass leaf the opening width of the jambs are reduced to suit the thinner door. Specially designed glass clamps are provided with the sliding gear.



Glass Leaf Kit Illustrations
Concealed Frame & Strike Jamb

Configurations

Designed to suit a range of opening sizes, simply cut-to-size to suit your exact opening.



Scan QR to view more
enigmapocketdoors.com/glass-leaf

Leaf Width	Leaf Height	Leaf(s)	Concealed Frame Kit		Visible Trim Kit			
24 Inches to 36 Inches	Up to 83 Inches	Single	SEL-PRT-10198	No. of Plasterboard Layers Required	1	SEL-PRT-10144	1	
		Double	SEL-PRT-10202		1	SEL-PRT-10148	1	
	Up to 112 Inches	Single	SEL-PRT-10200		1	SEL-PRT-10146	1	
		Double	SEL-PRT-10204		1	SEL-PRT-10150	1	
36 Inches to 48 Inches	Up to 83 Inches	Single	SEL-PRT-10199		No. of Plasterboard Layers Required	1	SEL-PRT-10145	1
		Double	SEL-PRT-10203			1	SEL-PRT-10149	1
	Up to 112 Inches	Single	SEL-PRT-10201			1	SEL-PRT-10147	1
		Double	SEL-PRT-10205			1	SEL-PRT-10151	1

Performance

Sustainably sourced timber parts.
System tested to over 100k cycles.
Supports doors up to 300lbs.



100k Cycle Load Tested



Supports Doors up to 175lbs

Door Leaf Configurations

Available as a single (opening from left or right) or double-leaf configurations to suit your specific requirements.



Single Leaf



Double Leaf

Door Leaf Options

The 0.4" thick glass door leaf is available in either clear or opaque glass to suit individual applications.



Clear Glass

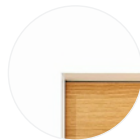


Opaque Glass

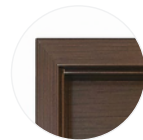
Frame/Trim Options

Choose a trim to suit your individual interior design style.

See p26



Concealed Frame



Visible Trim

Optional Enhancements

Customize your chosen pocket door system with a range of additional system options and enhancements to ease installation, optimize functionality and enhance the user experience.

**For large quantity orders*

See p28



Pre-assembled*
Rapid Install



Full Height (Flush)



Self-supporting Head



Perpendicular Wall

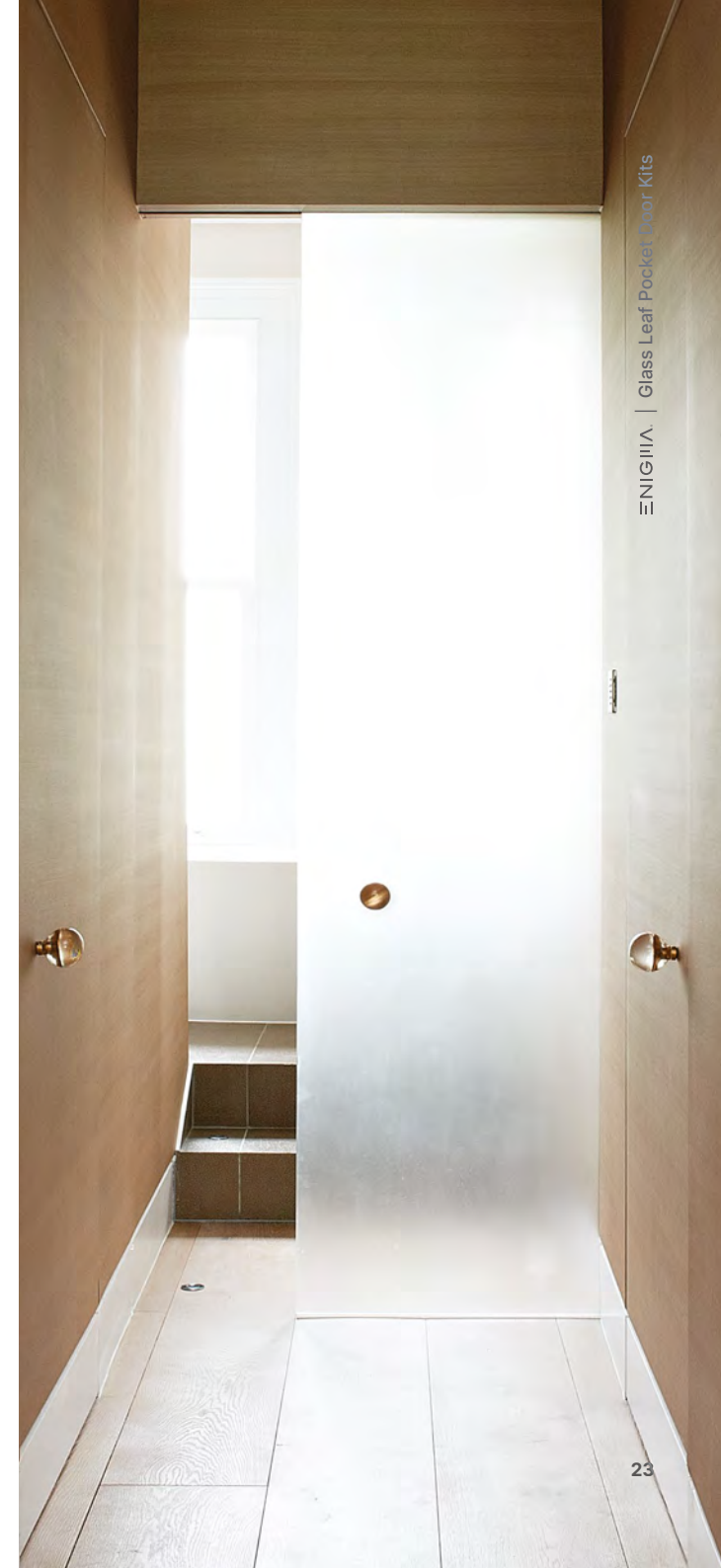


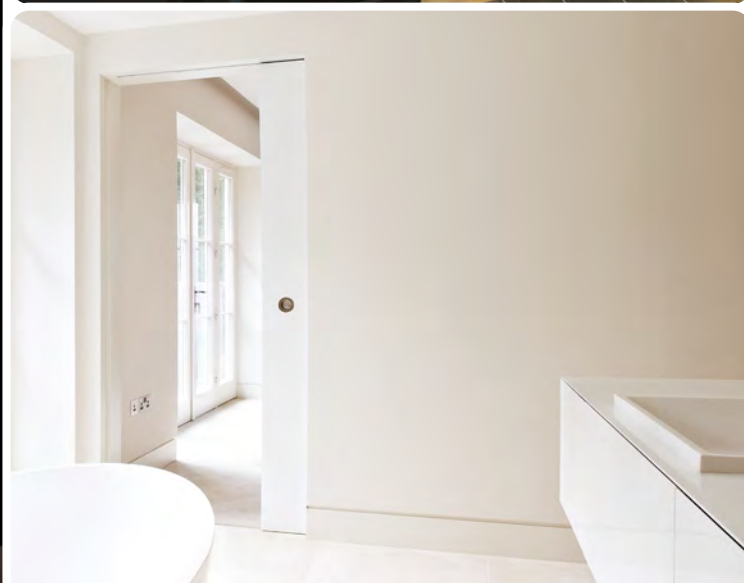
Soft Close/Open Dampener



Simultaneous Open Double-leaf only

**Image shown for illustration purposes only. Actual configuration varies.*







ENIGMA | Gallery



Technical Details

Enigma Pocket Doors

Frame/trim options to suit your interior design



Concealed Frame

Create contemporary interiors with a minimalist design and seamless aesthetics.

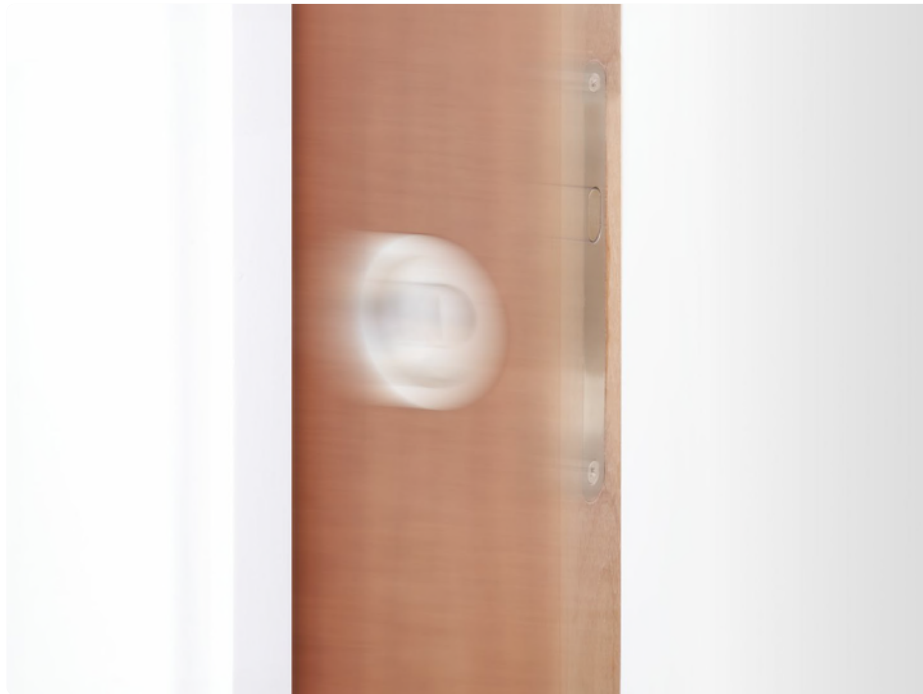


Visible Trim

An elegant, traditional look, Visible Trim Enigma is for use with architraves.

Soft close/open for the ultimate experience

Order Code
SEL-PRT-00368 / SEL-PRT-00557



Soft Close/Open

Dampened opening and closure to create the ultimate finish to the sliding doors.

The modular unit makes installation simple.

Technical Details

Enigma Pocket Doors

Optional enhancements elevating user experience



Pre-assembled Kit

Revolutionizing installation convenience with pre-assembled kits tailored to your structural openings. For large quantities of standard sizes.



Full Height Flush Head Kit

Full height, floor to ceiling Enigma doors give the ultimate open and spacious feel.



Self-supporting Head Kit

For situations where fit the head of the pocket door kit won't fit directly to the ceilings, or floor slab and deflection tolerance is required. Enables the head to be fitted either end and support up to 260lbs.

Order Code
SEL-PRT-00924



Perpendicular Wall

Used for applications where a door closes against a flat wall; the perpendicular wall jamb profile is provided.

Order Code
SEL-PRT-00923



Simultaneous Opening

Open both doors while only operating one leaf. Available on timber leaf kits only.



Self-close

The closer is provided with infinite adjustment providing an extremely user friendly experience. For doors up to 35 inches wide.

Order Code
SEL-PRT-00619



Touch Latch

130N touch latch allows you to completely conceal the door leaf within the cavity and removes the need for a finger pull.

Support

Surrounding your project

halo Project assistance **at every stage**

assist

call +44(0) 20 3880 0339 **email** support@enigmapocketdoors.com



STAGE #1

Concept

Our engagement at the initial concept stage helps to ensure that design aspirations can be achieved and compliance requirements fulfilled.



STAGE #2

Specification

Providing in-depth support in clarifying the project specification, securing all necessary compliance certification and if required, conducting site visits.



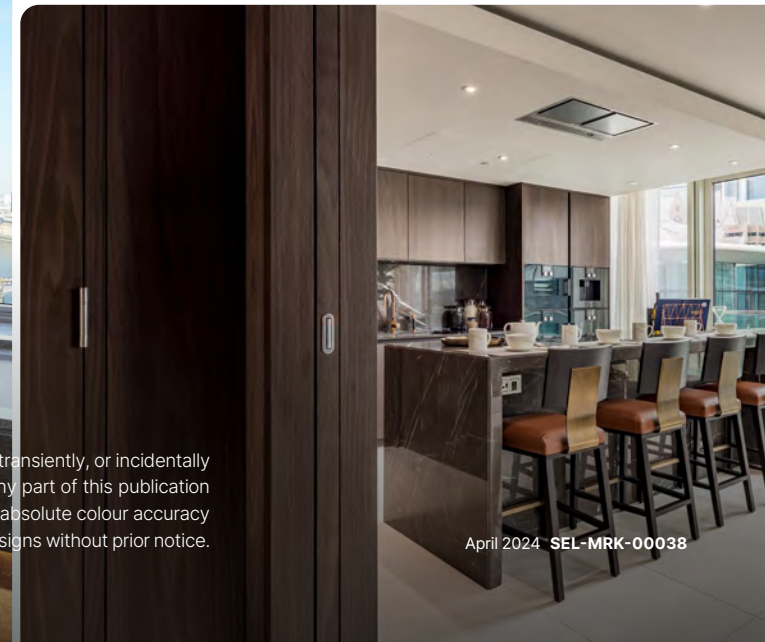
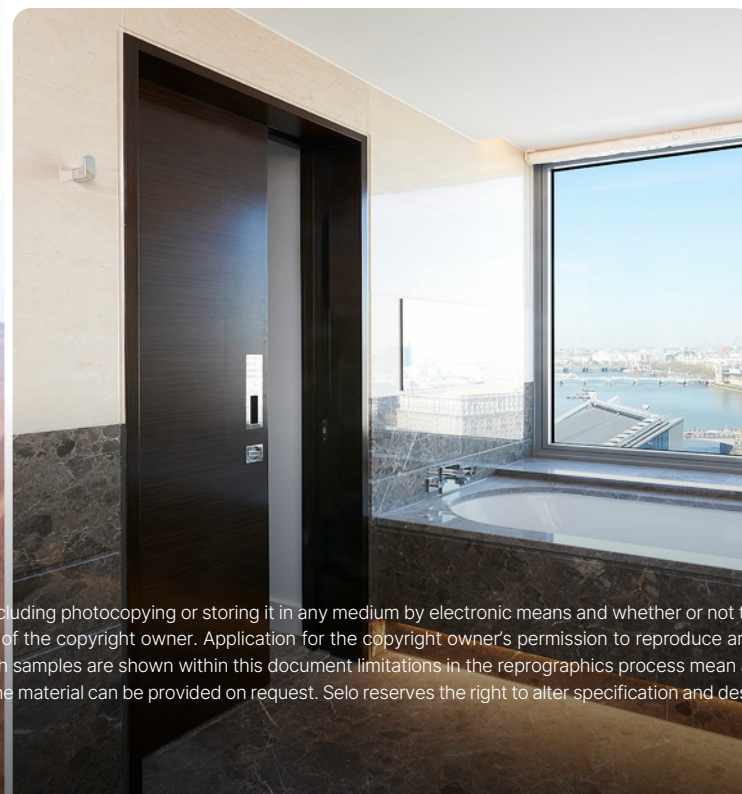
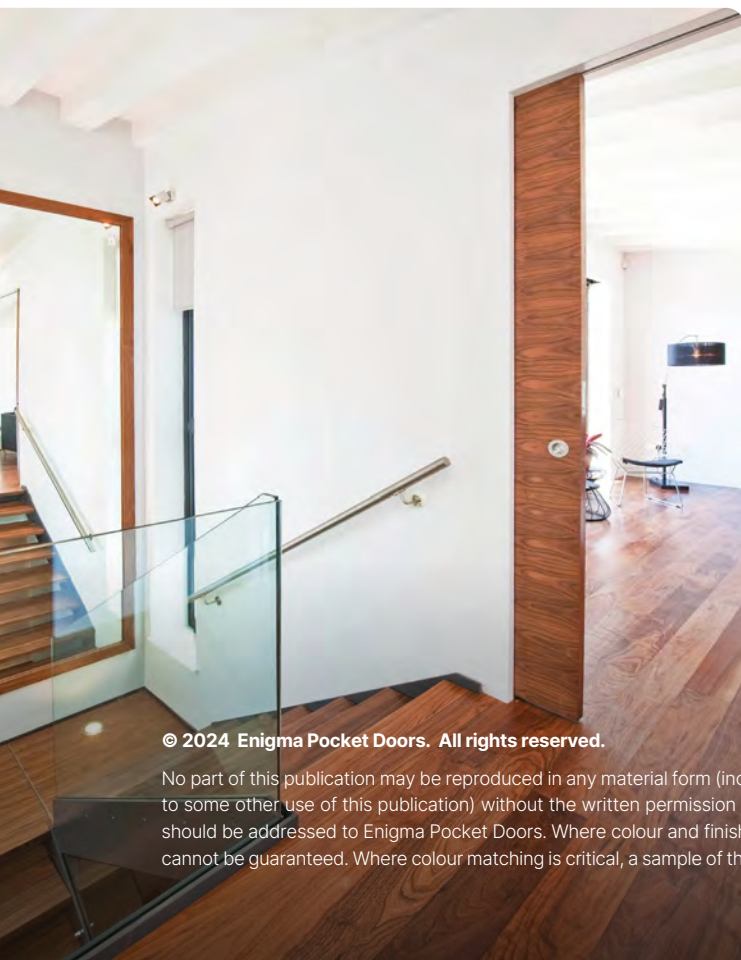
STAGE #3

Execution

As soon as a confirmed order is placed we assign a dedicated Project Manager. We will come to site and go through the schedule, provide an install demo, and conduct a compliance review.



Scan QR to find out more
enigmapocketdoors.com/project-assistance



© 2024 Enigma Pocket Doors. All rights reserved.

No part of this publication may be reproduced in any material form (including photocopying or storing it in any medium by electronic means and whether or not transiently, or incidentally to some other use of this publication) without the written permission of the copyright owner. Application for the copyright owner's permission to reproduce any part of this publication should be addressed to Enigma Pocket Doors. Where colour and finish samples are shown within this document limitations in the reprographics process mean absolute colour accuracy cannot be guaranteed. Where colour matching is critical, a sample of the material can be provided on request. Selo reserves the right to alter specification and designs without prior notice.

April 2024 SEL-MRK-00038

Contact

Support

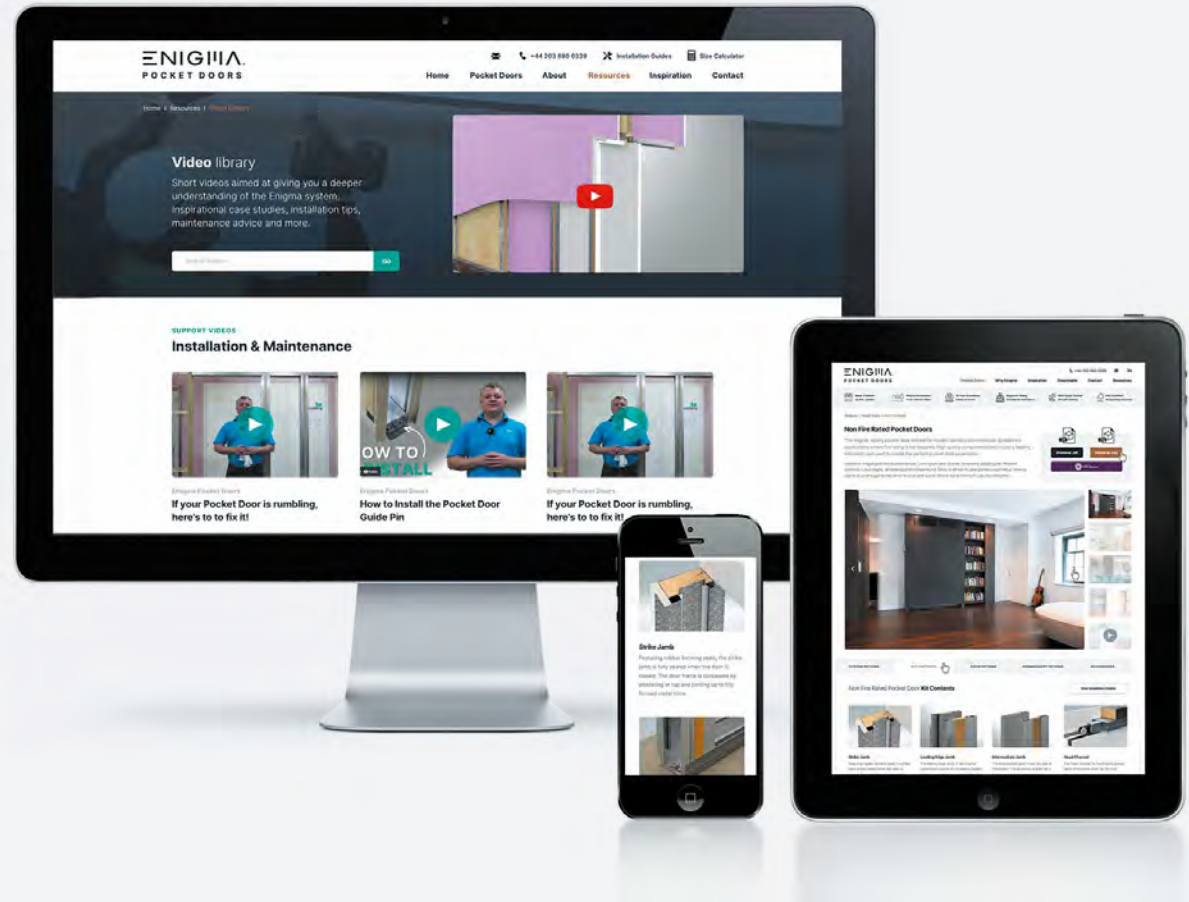
Our **support** goes above and beyond, like no other.

call **+44 (0)20 3880 0339**

email support@enigmapocketdoors.com



Visit our website for support
enigmapocketdoors.com/project-assistance



ENIGMA
POCKET DOORS

838 Walker Road Suit 21-2
Dover Kent Delaware 19904

www.enigmapocketdoors.com

